

The

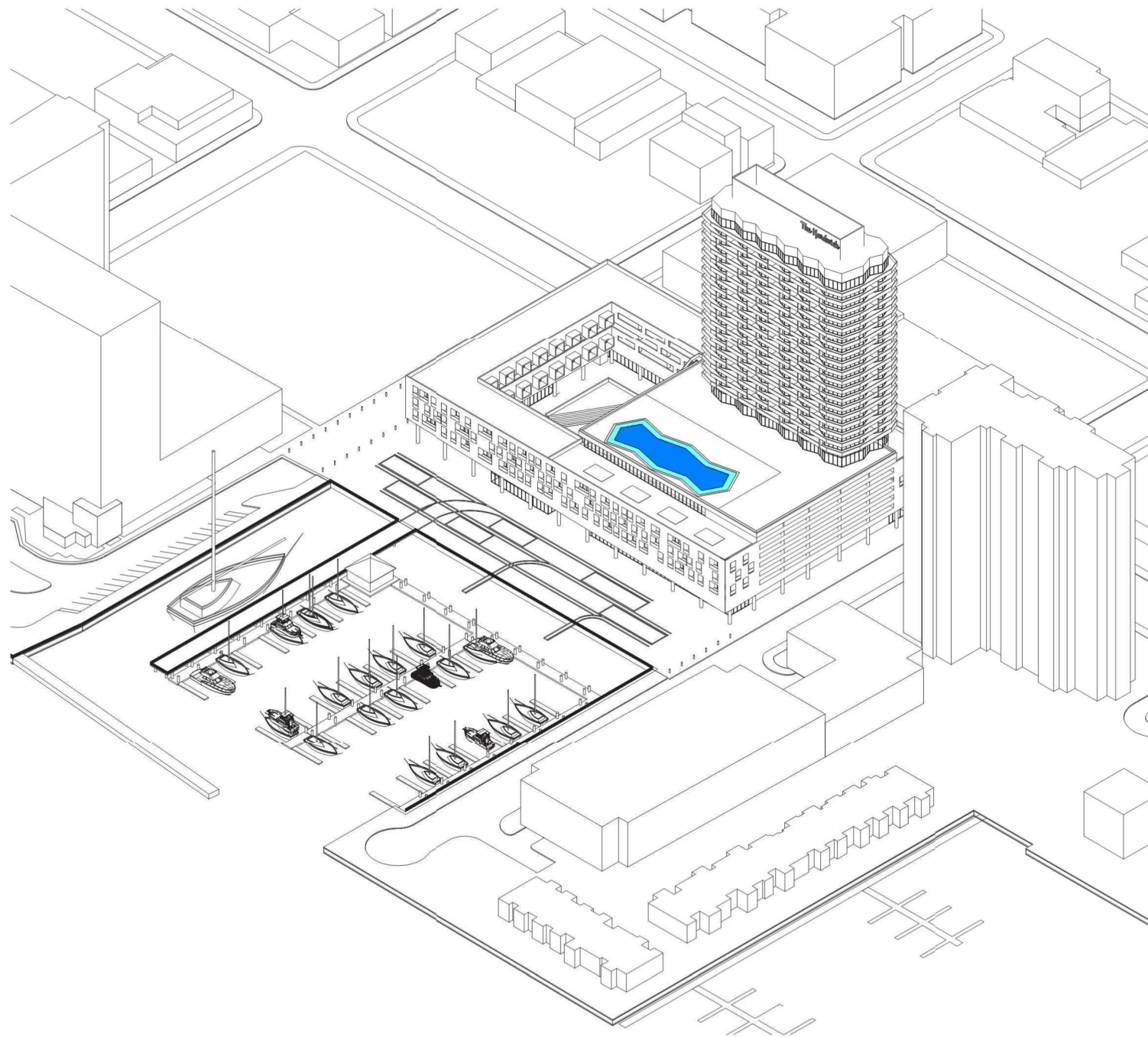
Hardwick

ADDENDUM

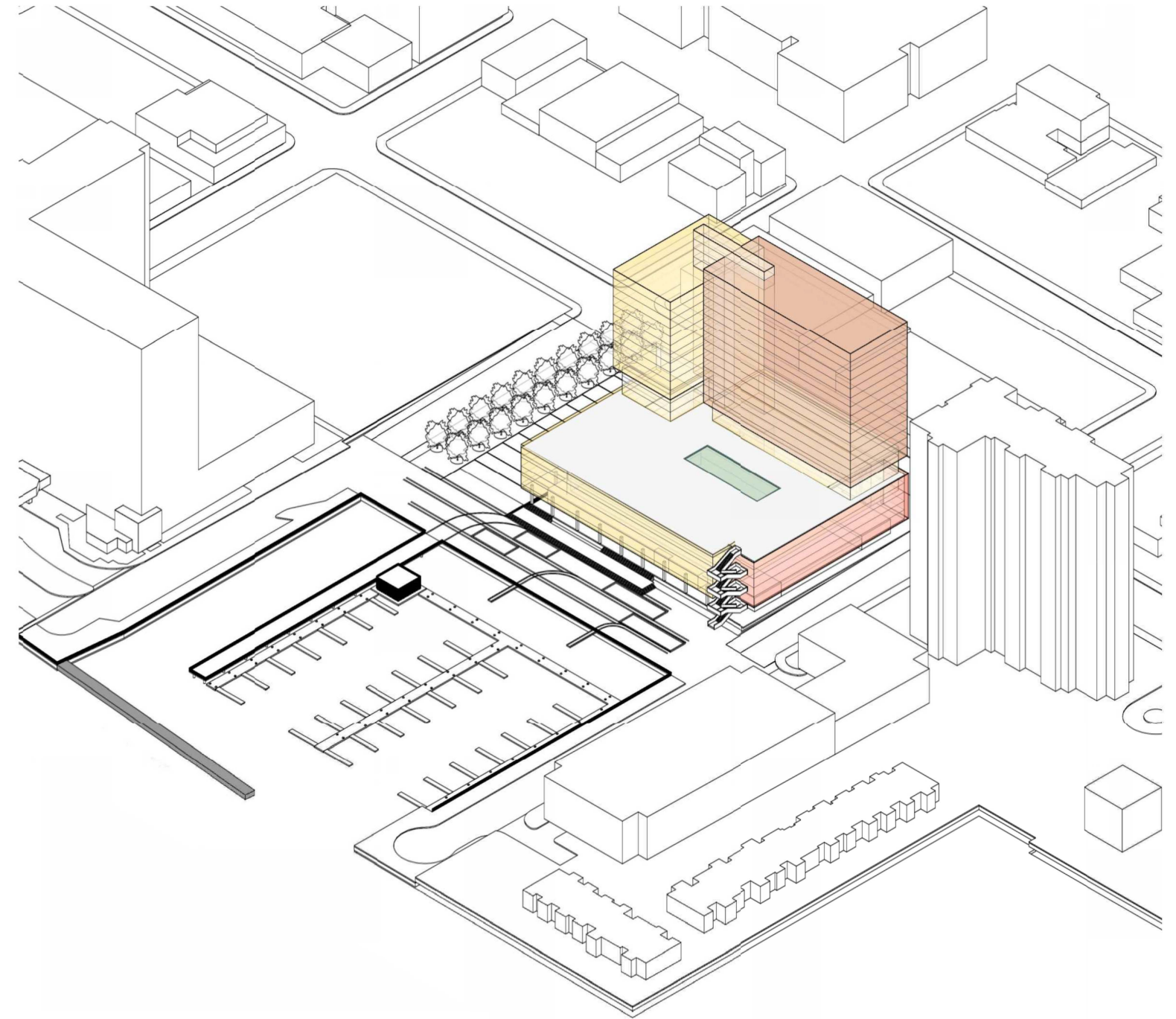
RFP COMPARISON

**Shulman +
Associates**

Architecture Interior Design Urban Design Graphic Design · 7300 Biscayne Boulevard Miami, FL 33138 305 438 0609 shulman-design.com AA



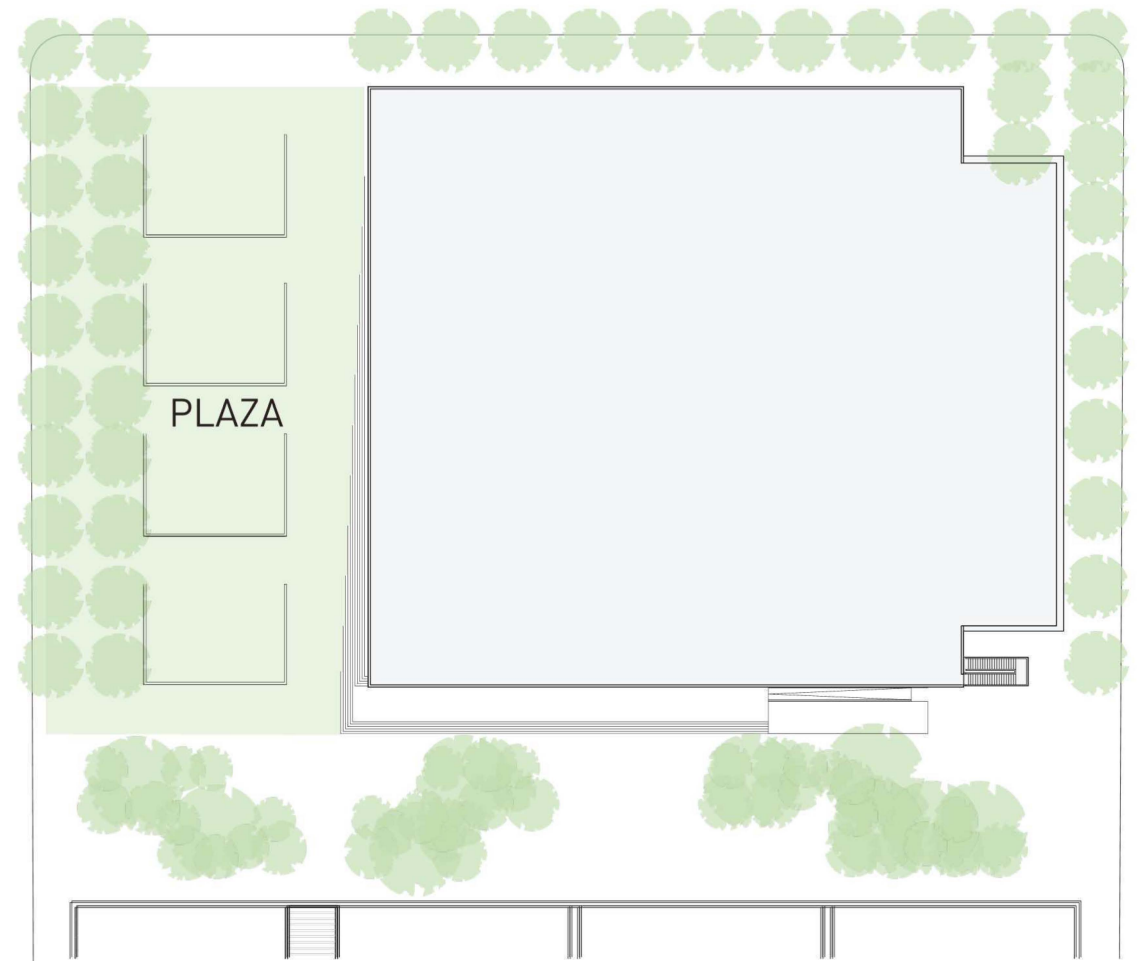
**RFP
SUBMITTAL**



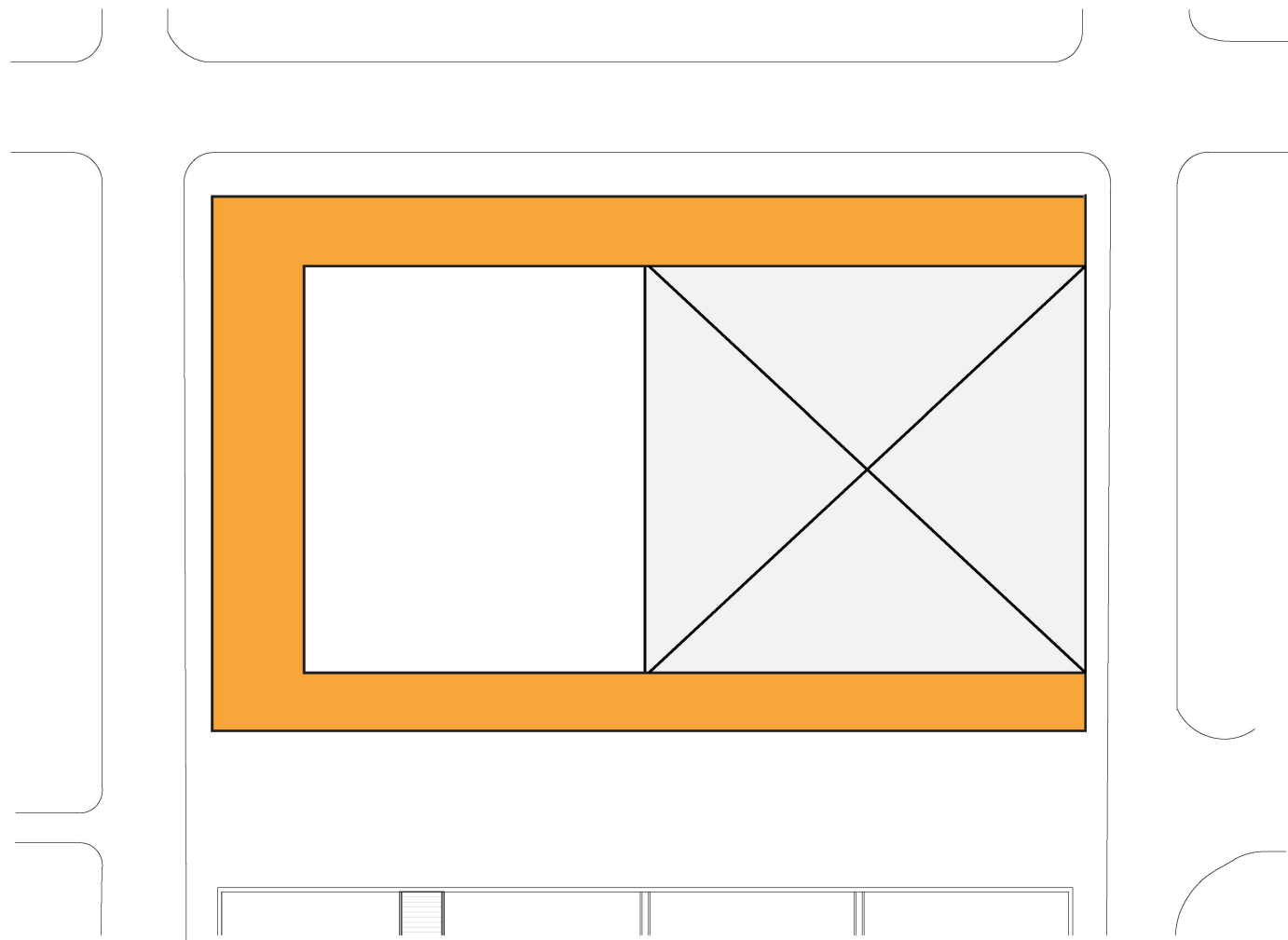
**REVISED
DESIGN**



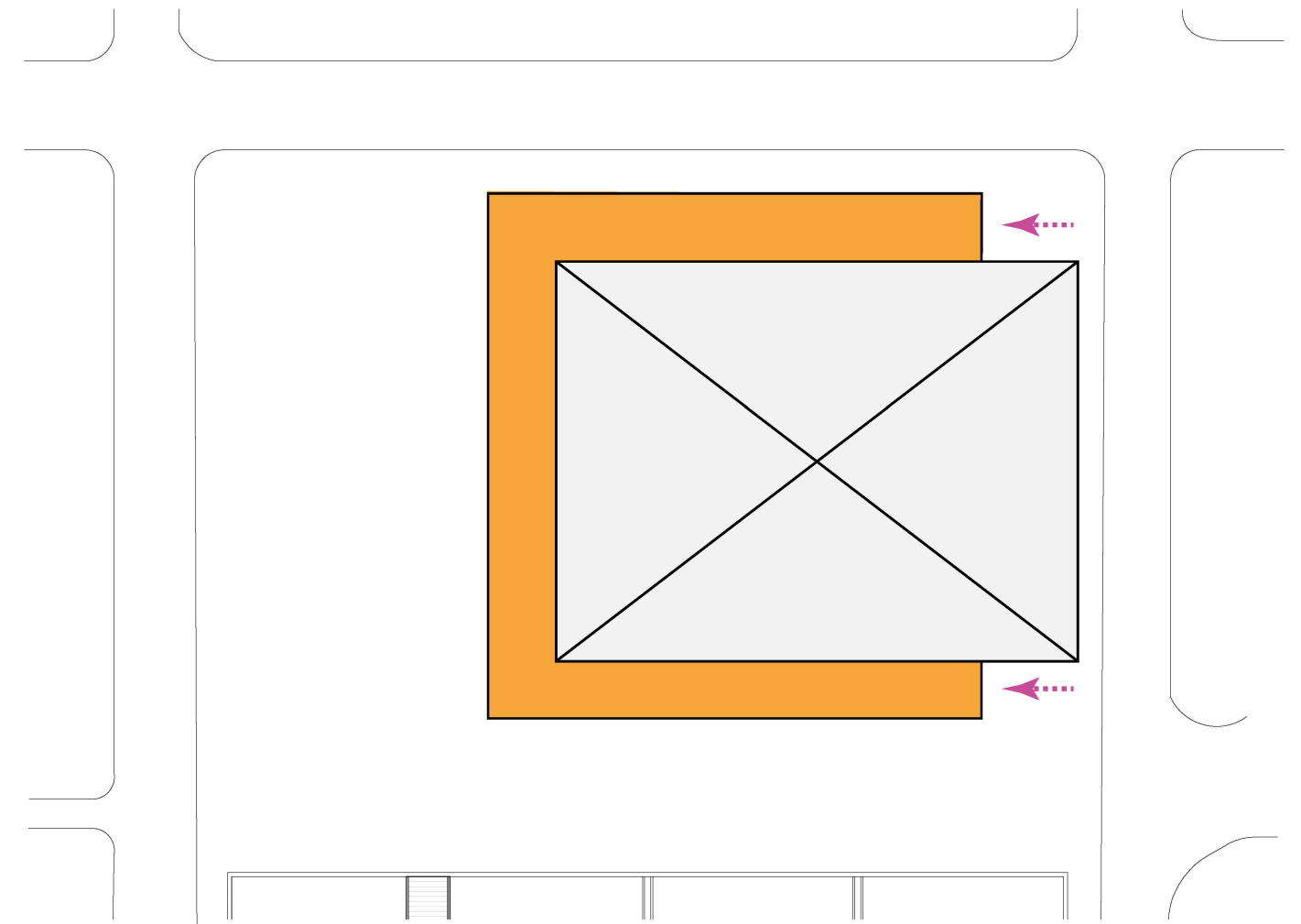
**RFP
SUBMITTAL**



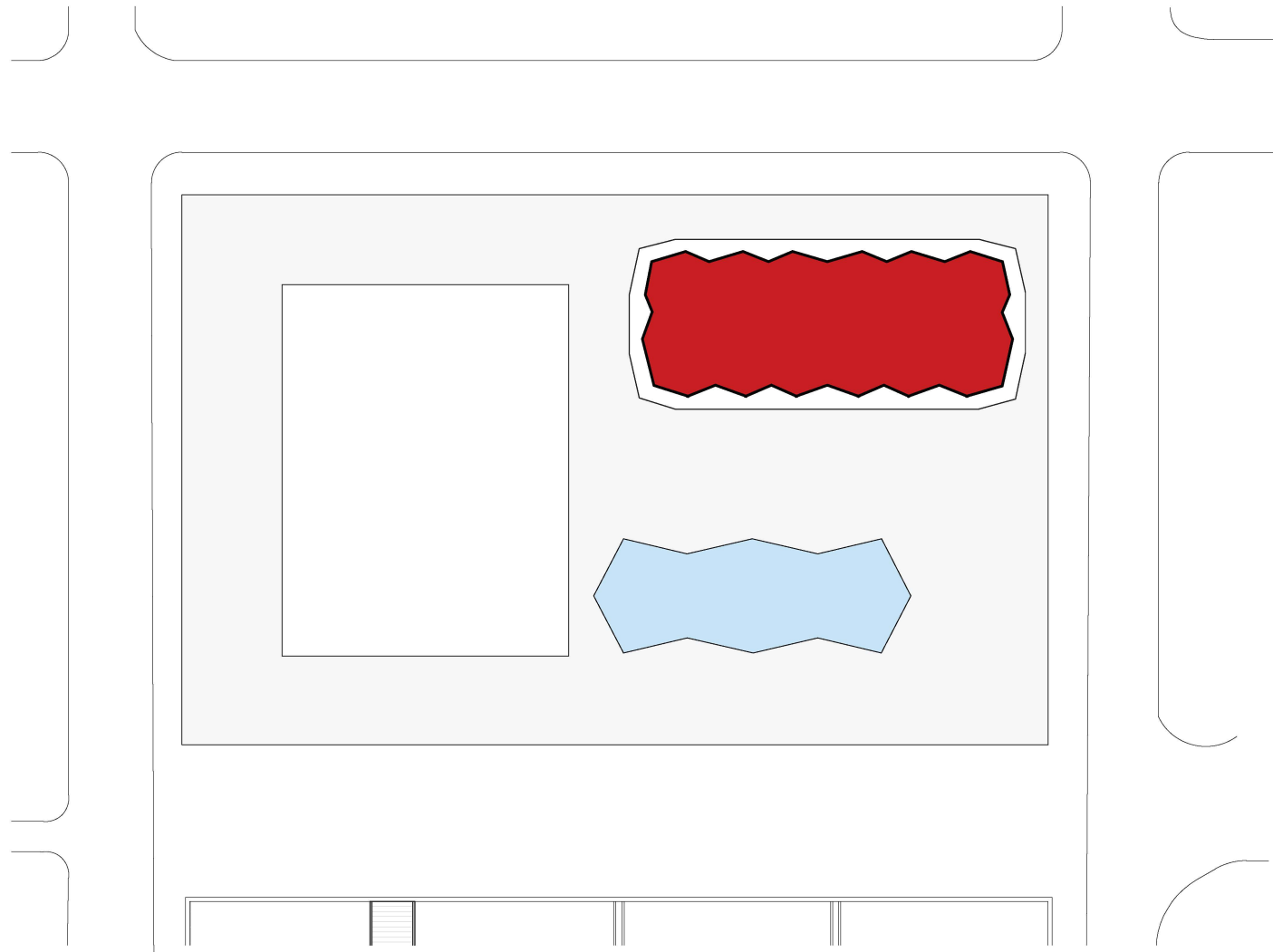
**REVISED
DESIGN**



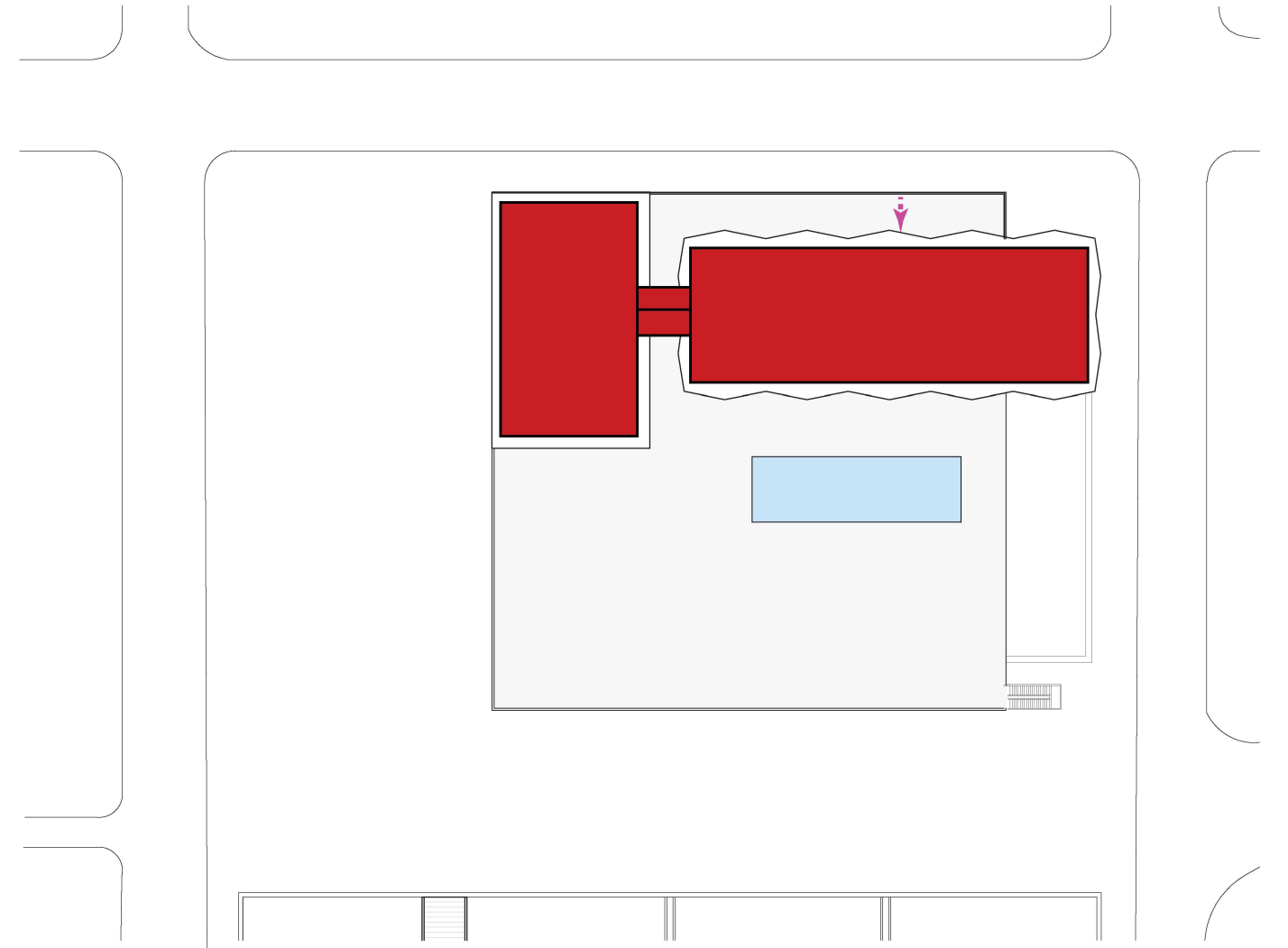
**RFP
SUBMITTAL**



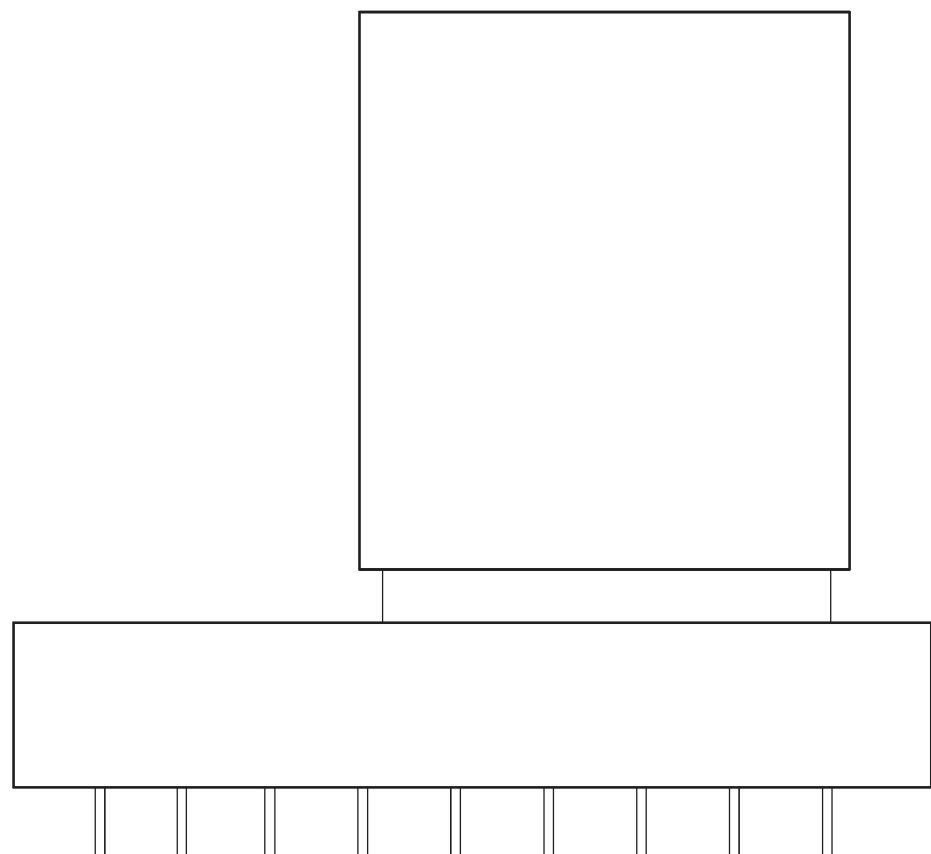
**REVISED
DESIGN**



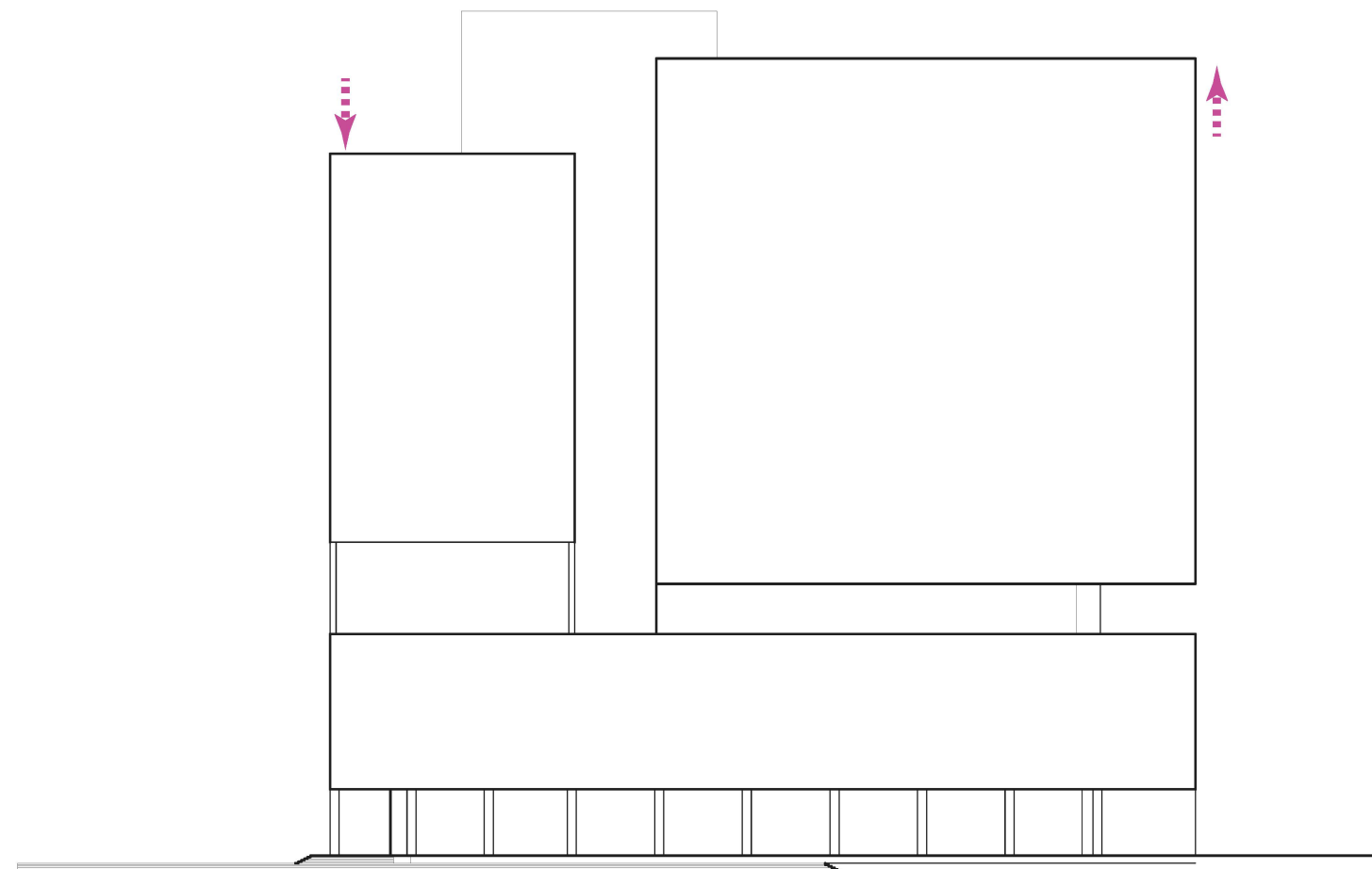
**RFP
SUBMITTAL**



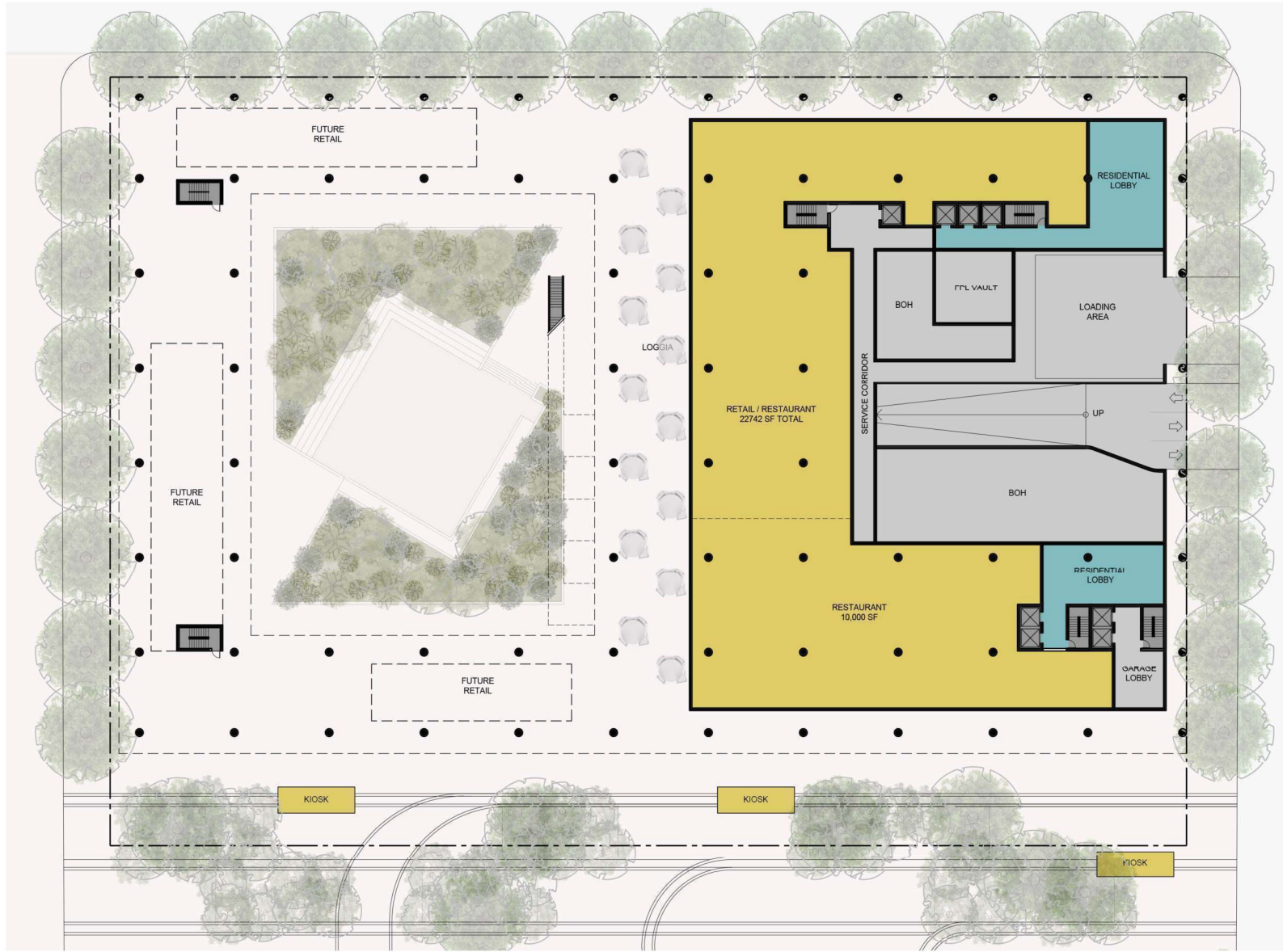
**REVISED
DESIGN**



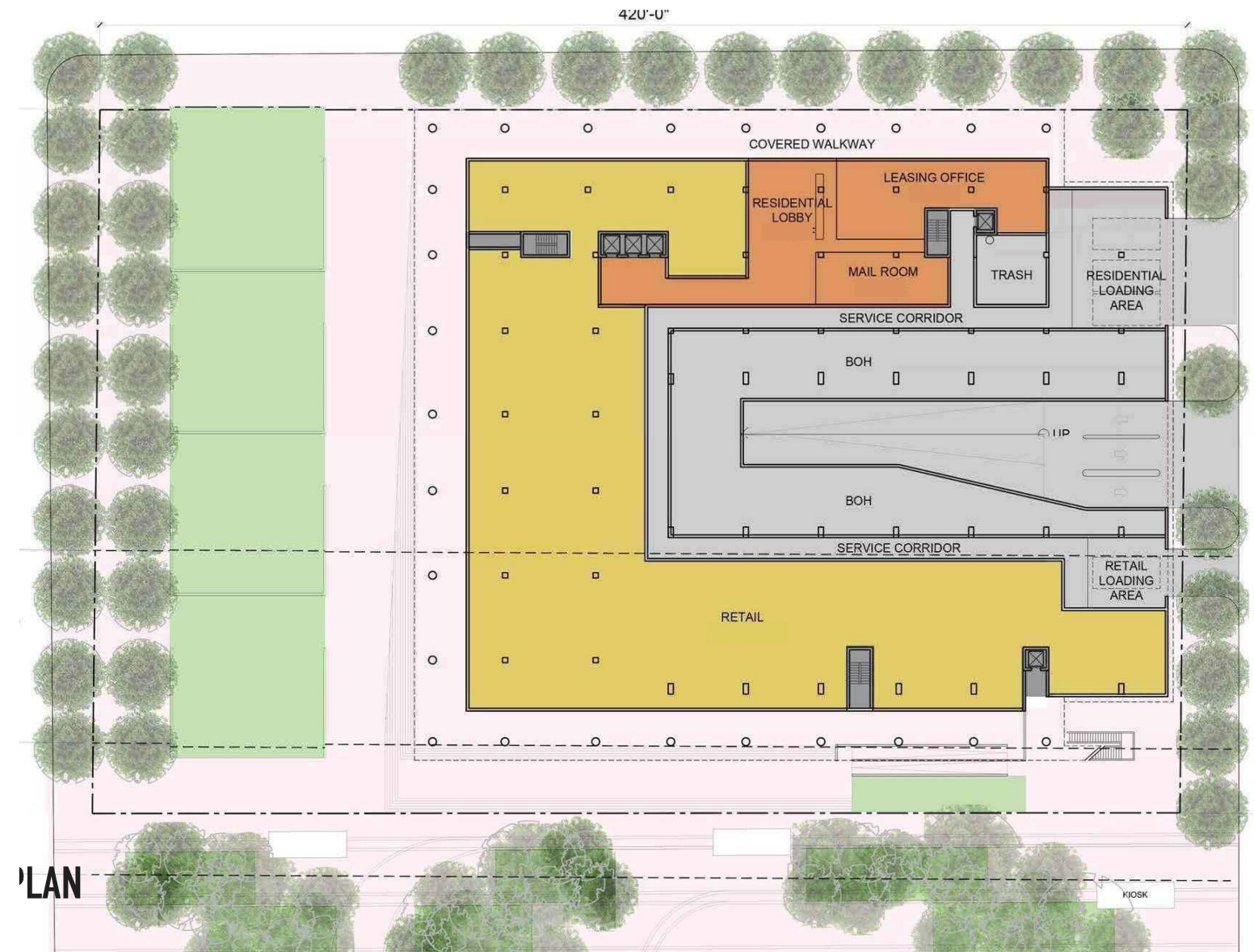
**RFP
SUBMITTAL**



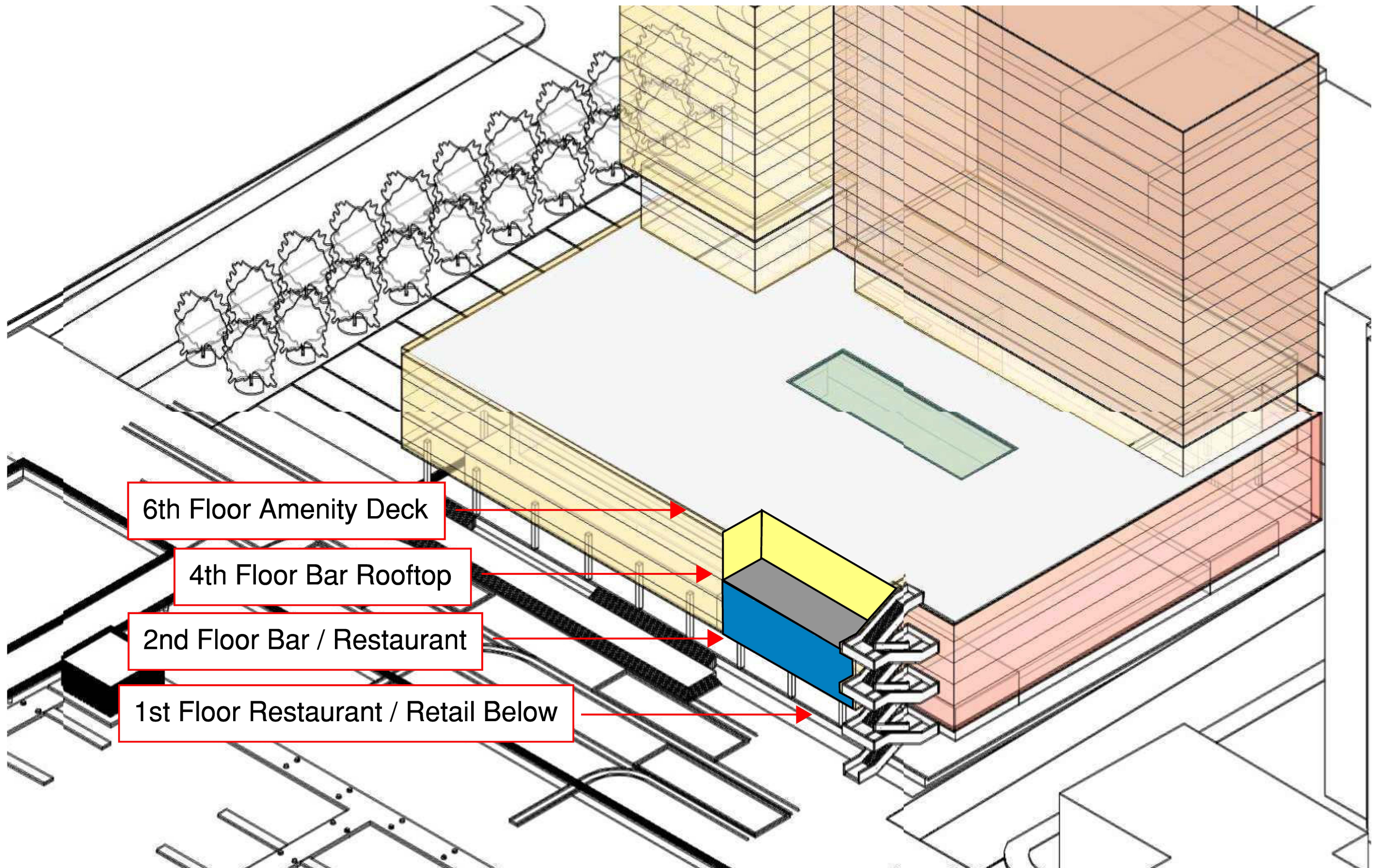
**REVISED
DESIGN**



**RFP
SUBMITTAL**



**REVISED
DESIGN**



6th Floor Amenity Deck

4th Floor Bar Rooftop

2nd Floor Bar / Restaurant

1st Floor Restaurant / Retail Below

Component	Area or No.
Retail (Current proposed)	25,000 SF
Residential (Gross)	350,000 SF
Amenities (Enclosed)	15,000 SF
Exterior elevated plazas and green spaces	50,000 SF
Parking Spaces (Street)	26
Parking Spaces (Total)	560

RESIDENTIAL BREAKDOWN

PEDESTAL - 6 FLOORS

<i>Type</i>	<i>Number</i>	<i>SF (ea.)</i>
Townhouses	8	2,000
Studios	6	572
1 BR	54	738
2 BR	24	1,125
<i>Subtotal Pedestal units</i>	<i>92</i>	

TOWER - 20 FLOORS

<i>Type</i>	<i>Number</i>	<i>SF (ea.)</i>
Studios	20	572
1 BR	156	738
2 BR	64	1,125
<i>Subtotal Tower units</i>	<i>240</i>	

TOTAL RESIDENTIAL UNITS 332

**RFP
SUBMITTAL**

Component	Area or No.
Retail (Current proposed)	25,000 SF
Residential (Gross)	360,000 SF
Amenities (Enclosed)	15,000 SF
Exterior elevated plazas and green spaces	10,000 SF
Parking Spaces (Street)	26
Parking Spaces (Total)	590

RESIDENTIAL BREAKDOWN

PEDESTAL - 4 FLOORS

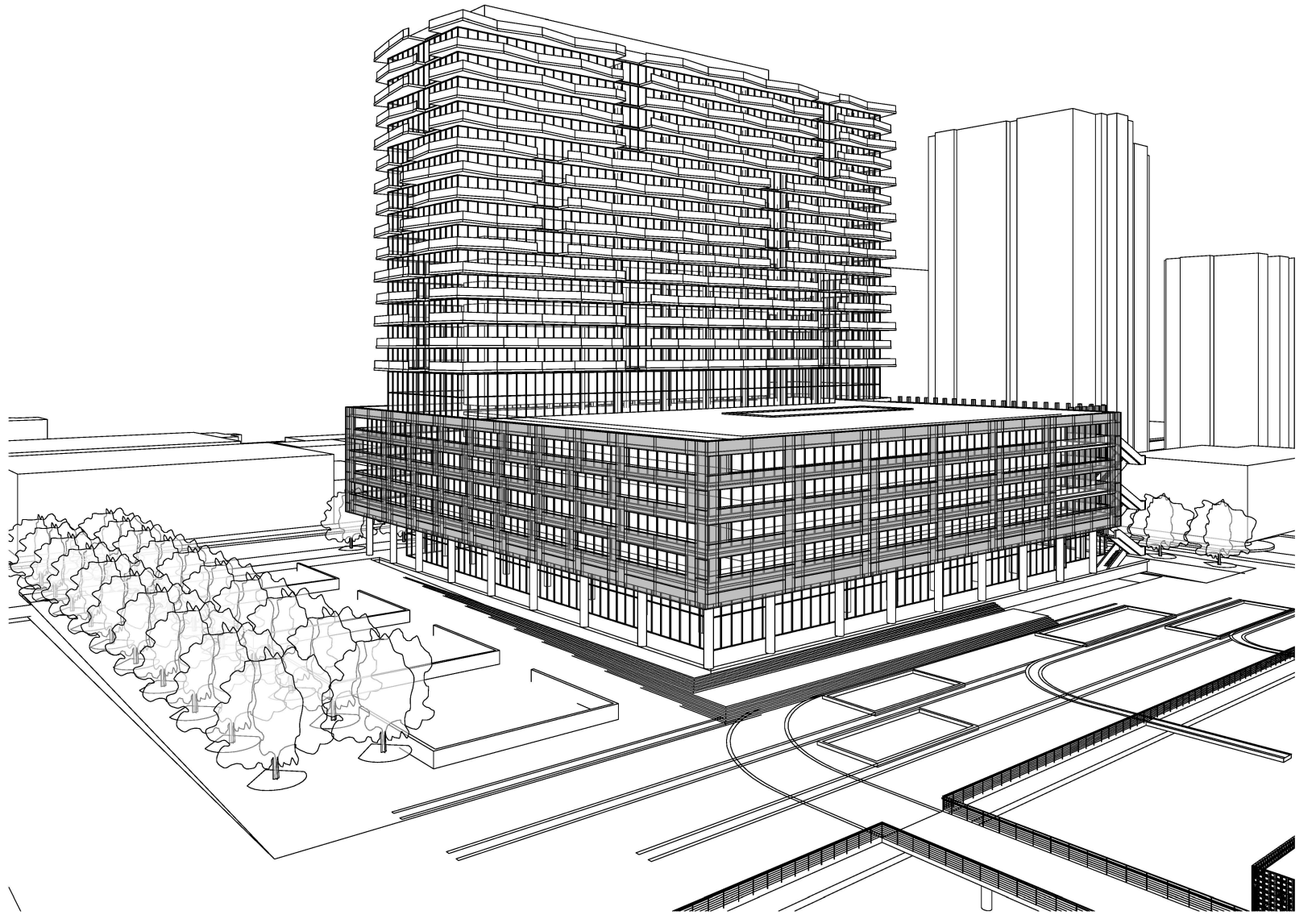
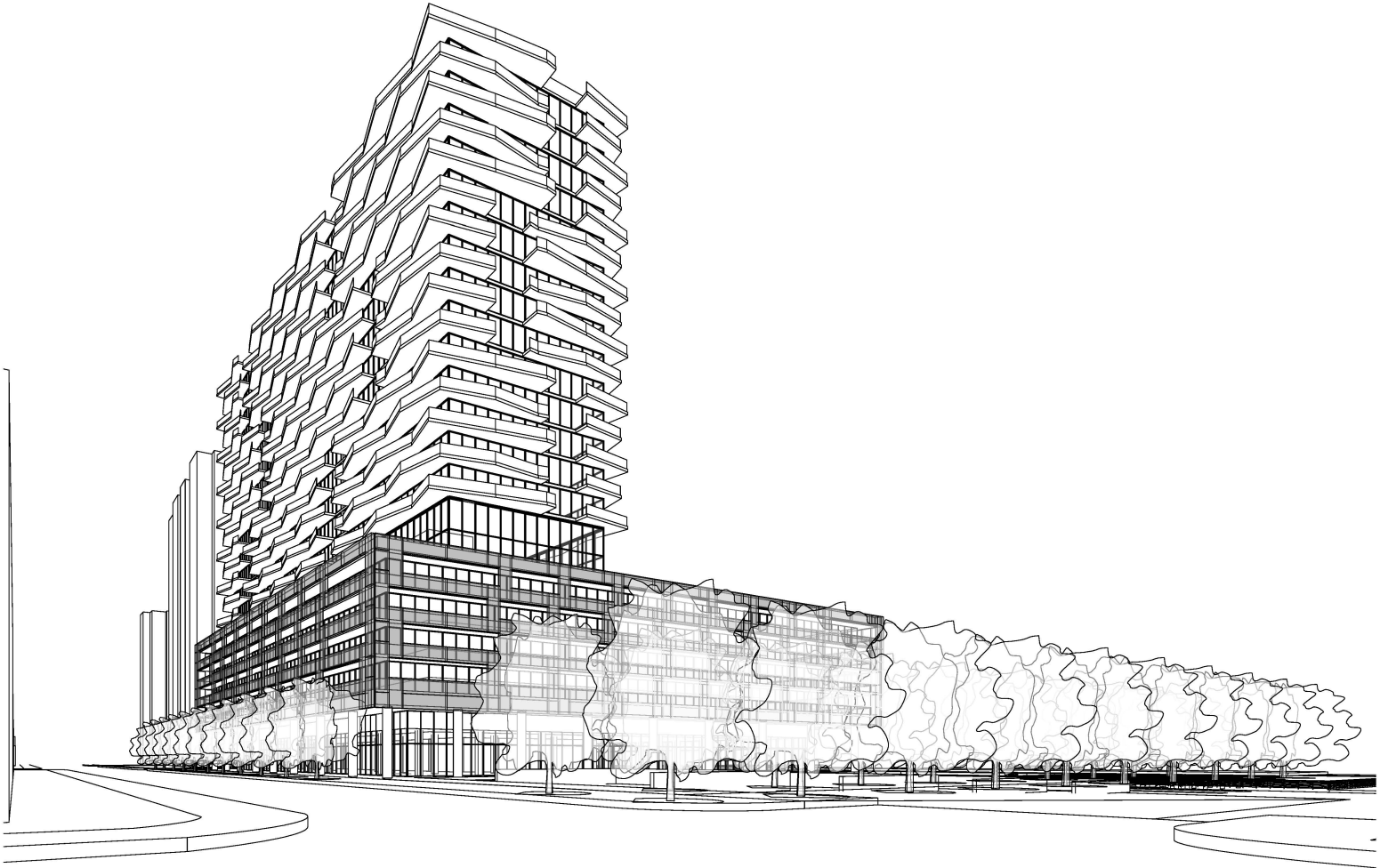
<i>Type</i>	<i>Number</i>	<i>SF (ea.)</i>
Townhouses	0	
Studios	0	
1 BR	68	730
2 BR	12	1,100
<i>Subtotal Pedestal units</i>	<i>80</i>	

TOWER - 16 FLOORS

<i>Type</i>	<i>Number</i>	<i>SF (ea.)</i>
Studios	42	550
1 BR	172	730
2 BR	66	1,100
<i>Subtotal Tower units</i>	<i>280</i>	

TOTAL RESIDENTIAL UNITS 360

**REVISED
DESIGN**



POTENTIAL
ALTERNATE
DESIGN



**RFP
SUBMITTAL**



**POTENTIAL
ALTERNATE
DESIGN**