



DOWNTOWN NEIGHBORHOOD BRAND IDENTITY GUIDELINES

2022

Brooklyn Identity Guidelines

FEBRUARY 2022

BROOKLYN

Contents

2 INTRODUCTION

3 VISION

4 BRAND IDENTITY

4 Logo Mark

5 Logo Colors

6 Logo Clear Space & Minimum Size

7 Logo Misuses

8 Color Palette

9 Typography Headlines

11 Typography Body Copy

12 Typography: Hierarchy

13 Graphic Devices

14 BRAND APPLICATIONS

These guidelines are designed to help you maintain and protect the Brooklyn brand identity. From our logo and color palette, to our typefaces and graphic treatments, everything you need to create engaging and cohesive communications is here.

Brooklyn should be characterized by modern design. Stainless steel and other metals combined with clean lines are recommended for signage. Minimalism is integral to the modern style. Bold accent colors, few additional details, and strong contrast.

Some call me hip. Others, cool. I think they are overused phrases, but if the shoe fits... To me, no one is a stranger. Just someone I haven't met yet. I seem to set trends without even trying. Young at heart, people are simply drawn to me for my positivity (and craft cocktails). I've grown, and people are taking notice.

Logo

Our logo is open to the idea that we are always trying to fill our community with new ideas and be the trendsetters. Brooklyn is structured to look like its always evolving with the open letter form yet bold stance with its block letter font.



BROOKLYN

Logo Usage: Colors

PRIMARY COLOR

The primary logo colors are orange and dark blue and are used depending on the communication.

REVERSE

The reverse logo is for use on darker backgrounds or photographs when using the full color logos it might compromise legibility.

PRIMARY COLOR: PANTONE 1375

The word "BROOKLYN" is rendered in a stylized, outlined font where the letters are interconnected. The color is a vibrant orange.

PRIMARY COLOR: PANTONE 300

The word "BROOKLYN" is rendered in a stylized, outlined font where the letters are interconnected. The color is a dark blue.

REVERSE

The word "BROOKLYN" is rendered in a stylized, outlined font where the letters are interconnected. The color is white, set against a solid black background.

Logo: Clear Space & Minimum Size

CLEAR SPACE

An area of clear space must surround our logo to protect its clarity and integrity. The clear space is equal to 1x the height of the 'b' in our logo. This is consistent no matter what size our logo is placed at. The boundary lines created by this area indicate the closest that our logo can come to other elements.

MINIMUM SIZE

Our logo should never appear smaller than 1.5" wide in printed form or 108 pixels wide in digital form. The minimum size is specified to ensure legibility.

CLEAR SPACE



MINIMUM SIZE

BROOKLYN



Logo Application: Misuses

Every element of our logo has been expertly crafted and should not be modified. Here are some examples to avoid when working with our logo.



BUSY BACKGROUNDS

The logo can be used on textured backgrounds and images, but always prioritize legibility of the logo. In some situations, using the reverse logo will create more visual contrast.

The word "BROOKLYN" in a pink-outlined font. A red diagonal line is drawn across the image from the top-left to the bottom-right, indicating this is a misuse of the logo.

COLOR

Do not manipulate the colors of the logo in any way.

The word "BROOKLYN" in a bold, solid yellow font. A red diagonal line is drawn across the image from the top-left to the bottom-right, indicating this is a misuse of the logo.

FONT

Do not alter or change the logo font in anyway. The logo should always maintain type size relationships as defined in the logo.

The word "BROOKLYN" in a yellow-outlined font, with the "K" and "L" overlapping. A red diagonal line is drawn across the image from the top-left to the bottom-right, indicating this is a misuse of the logo.

LOCK-UP

Do not break the lock-up in any way.

The word "BROOKLYN" in a yellow-outlined font with a dark shadow effect. A red diagonal line is drawn across the image from the top-left to the bottom-right, indicating this is a misuse of the logo.

VISUAL EFFECTS

Do not apply any visual effects such as drop shadows, bevel/emboss, glow, blur, etc.

The word "BROOKLYN" in a yellow-outlined font, stretched horizontally. A red diagonal line is drawn across the image from the top-left to the bottom-right, indicating this is a misuse of the logo.

SCALE

The logo should always be scaled proportionately. Do not stretch or condense the logo.

Color Palette

Our primary colors of orange and dark blue lead our main communications.

To increase the range of design options, our secondary colors can be used with our Brooklyn collateral.

PRIMARY COLORS



PANTONE 1375
CMYK: 0 45 96 0
RGB: 255 159 25
HEX#: FF9F19



PANTONE 300
CMYK: 100 62 7 1
RGB: 0 93 185
HEX#: 005DB9

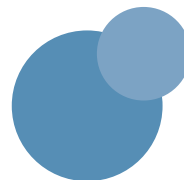
SECONDARY COLORS



PANTONE 716
CMYK: 4 64 100 0
RGB: 237 120 0
HEX#: ED7800



PANTONE 7428
CMYK: 41 87 57 40
RGB: 109 43 61
HEX#: 6D2B3D



PANTONE 377
CMYK: 58 22 100 0
RGB: 121 154 5
HEX#: 799A05



PANTONE 587
CMYK: 13 3 56 0
RGB: 227 226 41
HEX#: E2E28C

Typography:
Headlines

PRIMARY HEADLINE FONT
OPTION 1

Azo Sans Medium inspired by the constructivist typefaces of the 1920's. It's nuances soften the strictness of pure geometry, and makes it more human and pleasant to read in longer texts.

(ADOBE FONTS)

Azo Sans Medium

AaBbCcDdEeFfGgHhIiJj

KkLlMmNnOoPpQqRrSs

TtUuVvWwXxYyZz

0123456789 (&?!/,:;-_*")

Typography:
Headlines

PRIMARY HEADLINE FONT
OPTION 2

Address Sans indulges in the spirit and aesthetics of mid-century Modern – Italian industrial design, sleek coffee makers, stylish cars, seductive jazz pressed on vinyl – with a charm and charisma that defies time. It evokes history but is decisively created for today. (ADOBE FONTS)

Address Sans Pro

AaBbCcDdEeFfGgHhIiJj

KkLlMmNnOoPpQqRrSs

TtUuVvWwXxYyZz

0123456789 (&?!/,:;-_*")

Light
abcdefghijklm
nopqrstuvwxyz
0123456789

Regular
abcdefghijklm
nopqrstuvwxyz
0123456789

SemiBold
abcdefghijklm
nopqrstuvwxyz
0123456789

Bold
abcdefghijklm
nopqrstuvwxyz
0123456789

Typography:
Body Copy

BODY COPY TYPEFACE

Address Sans indulges in the spirit and aesthetics of mid-century Modern – Italian industrial design, sleek coffee makers, stylish cars, seductive jazz pressed on vinyl – with a charm and charisma that defies time. It evokes history but is decisively created for today. (ADOBE FONTS)

Address Sans Pro

AaBbCcDdEeFfGgHhIiJj

KkLlMmNnOoPpQqRrSs

TtUuVvWwXxYyZz

0123456789 (&?!/,:;-_*")

Light

abcdefghijklm
nopqrstuvwxyz
0123456789

Regular

abcdefghijklm
nopqrstuvwxyz
0123456789

Regular Italic

*abcdefghijklm
nopqrstuvwxyz
0123456789*

SemiBold

abcdefghijklm
nopqrstuvwxyz
0123456789

Bold

**abcdefghijklm
nopqrstuvwxyz
0123456789**

Typography: Hierarchy

This shows simple combinations of fonts to create a clear hierarchy of information.

PRIMARY HEADLINE OPTION 1 (Address Sans Pro)

Hello, this is a great headline.

SUBHEADING

Pudit omnis ipitam qui officie ndioria. Udignit ex experferio. Et enita corest esequatis quam qui cor aritam inciate mposandae porem elicimp oresequaepe reruptium aruptate veliqui di oditi sitatib uscium rem ulparum quatem quam rae optae sanihil incte occae nat aspedit ma sapiaut reperum.

PRIMARY HEADLINE OPTION 2 (Address Sans Pro)

Hello, this is a great headline.

SUBHEADING

Pudit omnis ipitam qui officie ndioria. Udignit ex experferio. Et enita corest esequatis quam qui cor aritam inciate mposandae porem elicimp oresequaepe reruptium aruptate veliqui di oditi sitatib uscium rem ulparum quatem quam rae optae sanihil incte occae nat aspedit ma sapiaut reperum.

Hello, this is a great headline.

SUBHEADING

Pudit omnis ipitam qui officie ndioria. Udignit ex experferio. Et enita corest esequatis quam qui cor aritam inciate mposandae porem elicimp oresequaepe reruptium aruptate veliqui di oditi sitatib uscium rem ulparum quatem quam rae optae sanihil incte occae nat aspedit ma sapiaut reperum.

Hello, this is a great headline.

SUBHEADING

Pudit omnis ipitam qui officie ndioria. Udignit ex experferio. Et enita corest esequatis quam qui cor aritam inciate mposandae porem elicimp oresequaepe reruptium aruptate veliqui di oditi sitatib uscium rem ulparum quatem quam rae optae sanihil incte occae nat aspedit ma sapiaut reperum.

Graphic Devices: Sample Brooklyn Pattern

Pattern that evokes the culture and energy of the Brooklyn area. This pattern can be used in the background marketing elements to bring a sense of the area with color and movement.

BROOKLYN PATTERN: PRIMARY COLORS



BROOKLYN PATTERN: SECONDARY COLORS



Sample Application:
Banners



Sample Application:
Signage



Sample Application:
Tote Bag / Water Bottle / Hat



BROOKLYN

LaVilla Identity Guidelines

FEBRUARY 2022

Contents

2 INTRODUCTION

3 VISION

4 BRAND IDENTITY

4 Logo Mark

5 Logo Colors

6 Logo Clear Space & Minimum Size

7 Logo Misuses

8 Color Palette

9 Typography Headlines

11 Typography Body Copy

12 Typography: Hierarchy

13 Graphic Devices

14 BRAND APPLICATIONS

These guidelines are designed to help you maintain and protect the LaVilla brand identity. From our logo and color palette, to our typefaces and graphic treatments, everything you need to create engaging and cohesive communications is here.

LaVilla should follow a Traditional design style. Dark, finished wood, rich color palettes, with a variety of textures and curved, symmetrical lines. Inspired by 18th and 19th century designs. Layered in color and texture, this traditional style brings a sense of history and glamor.

I have a rich heritage. But I've reinvented myself as of late. I was a true melting pot in my past, most notably African American, Jewish and Greek cultures. Once the "Harlem of the South", rich history of entertainment, music, and theatre runs in my veins. But I am also part of a new generation of forward-lookers—diverse and inclusive. I was an afterthought for a while, but now I am blazing a trail to connect this city.

SAMPLE Logo

With the many different cultures, history and vibrancy of the area the LaVilla logo helps to exhibit it through form and color. All the flourishes and non linear font usage brings this melting pot of diversity together and a couple music note exclamation points exemplify this.



LaVi!!a *

****LaVilla logo shown is a sample logo only and will not be included in future branding, marketing, and promotional efforts. A new logo will be incorporated upon selection.***

SAMPLE Logo
Usage: Colors

PRIMARY COLOR

The primary logo colors are burgundy and deep yellow and are used depending on the communication.

REVERSE

The reverse logo is for use on darker backgrounds or photographs when using the full color logos it might compromise legibility.

PRIMARY COLOR: PANTONE 1805

The LaVilla logo is rendered in a bold, serif font. The letters 'L', 'a', 'V', 'i', and 'a' are connected. The 'V' has a distinctive shape with a small triangle above it. The 'i' has a dot. The final 'a' is also connected to the 'i'. The entire logo is in a deep red or burgundy color.

PRIMARY COLOR: PANTONE 137

The LaVilla logo is rendered in a bold, serif font, identical in structure to the burgundy version. The entire logo is in a deep yellow or gold color.

REVERSE

The LaVilla logo is rendered in a bold, serif font, identical in structure to the previous versions. The entire logo is in white, set against a solid black square background.

SAMPLE Logo: Clear Space & Minimum Size

CLEAR SPACE

An area of clear space must surround our logo to protect its clarity and integrity. The clear space is equal to 1x the height of the 'a' in our logo. This is consistent no matter what size our logo is placed at. The boundary lines created by this area indicate the closest that our logo can come to other elements.

MINIMUM SIZE

Our logo should never appear smaller than 1" wide in printed form or 72 pixels wide in digital form. The minimum size is specified to ensure legibility.

CLEAR SPACE



MINIMUM SIZE

LaVilla

1" (72 PIXELS)

SAMPLE Logo
Application:
Misuses

Every element of our logo has been expertly crafted and should not be modified. Here are some examples to avoid when working with our logo.



BUSY BACKGROUNDS

The logo can be used on textured backgrounds and images, but always prioritize legibility of the logo. In some situations, using the reverse logo will create more visual contrast.



COLOR

Do not manipulate the colors of the logo in any way.



FONT

Do not alter or change the logo font in anyway. The logo should always maintain type size relationships as defined in the logo.



LOCK-UP

Do not break the lock-up in any way.



VISUAL EFFECTS

Do not apply any visual effects such as drop shadows, bevel/emboss, glow, blur, etc.



SCALE

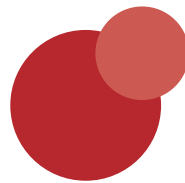
The logo should always be scaled proportionately. Do not stretch or condense the logo.

Color Palette

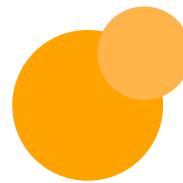
Our primary colors of burgundy and deep yellow lead our main communications.

To increase the range of design options, our secondary colors can be used with our LaVilla Pattern.

PRIMARY COLORS

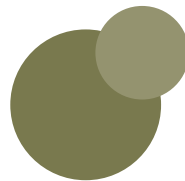


PANTONE 1805
CMYK: 21 96 90 12
RGB: 17 41 46
HEX#: B2292E

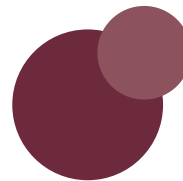


PANTONE 137
CMYK: 0 42 100 0
RGB: 255 165 0
HEX#: FFA500

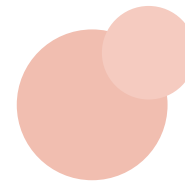
SECONDARY COLORS



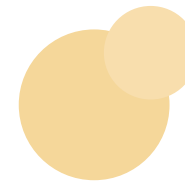
PANTONE 5763
CMYK: 53 38 78 17
RGB: 117 123 78
HEX#: 757B4E



PANTONE 7428
CMYK: 41 87 57 40
RGB: 109 43 61
HEX#: 6D2B3D



PANTONE 7520
CMYK: 6 27 26 0
RGB: 236 191 176
HEX#: ECBFB0



PANTONE 7402
CMYK: 7 12 46 0
RGB: 237 216 153
HEX#: EDD899

Typography:
Headlines

PRIMARY HEADLINE FONT
OPTION 1

Angie Pro Demibold is a contemporary slab-serif font designed. The strong block-shaped serifs give this font the prominence needed for impactful headlines.

Angie Pro
AaBbCcDdEeFfGgHhIiJj
KkLlMmNnOoPpQqRrSs
TtUuVvWwXxYyZz
0123456789 (&!/,,:;-_*")

Typography:
Headlines

PRIMARY HEADLINE FONT
OPTION 2

Raleway Medium is a more simplified display face with both old style and lining numerals, standard and discretionary ligatures, a pretty complete set of diacritics, as well as a stylistic alternate inspired by more geometric sans-serif typeface. (GOOGLE FONTS)

Raleway Medium

AaBbCcDdEeFfGgHhIiJj

KkLlMmNnOoPpQqRrSs

TtUuVvWwXxYyZz

0123456789 (&?!/ ,:;- _ *")

Light
abcdefghijklm
nopqrstuvwxyz
0123456789

Regular
abcdefghijklm
nopqrstuvwxyz
0123456789

Medium
abcdefghijklm
nopqrstuvwxyz
0123456789

Bold
abcdefghijklm
nopqrstuvwxyz
0123456789

Typography:
Body Copy

BODY COPY TYPEFACE

Adelle a versatile and authoritative slab serif font family with no shortage of personality.

Adelle Regular

AaBbCcDdEeFfGgHhIiJj

KkLlMmNnOoPpQqRrSs

TtUuVvWwXxYyZz

0123456789 (&?!/,:;-_*")

Light

abcdefghijklm
nopqrstuvwxyz
0123456789

Regular

abcdefghijklm
nopqrstuvwxyz
0123456789

SemiBold

abcdefghijklm
nopqrstuvwxyz
0123456789

Bold

abcdefghijklm
nopqrstuvwxyz
0123456789

Typography: Hierarchy

This shows simple combinations of fonts to create a clear hierarchy of information.

PRIMARY HEADLINE OPTION 1 (Angie Pro Demibold)

Hello, this is a great headline.

SUBHEADING

Pudit omnis ipitam qui officie ndioria. Udignit ex experferio. Et enita corest esequatis quam qui cor aritam inciate mposandae porem elicimp oresequaepe reruptium aruptate veliqui di oditi sitatib uscium rem ulparum quatem quam rae optae sanihil incte occae nat aspedit ma sapiaut reperum.

PRIMARY HEADLINE OPTION 2 (Raleway)

Hello, this is a great headline.

SUBHEADING

Pudit omnis ipitam qui officie ndioria. Udignit ex experferio. Et enita corest esequatis quam qui cor aritam inciate mposandae porem elicimp oresequaepe reruptium aruptate veliqui di oditi sitatib uscium rem ulparum quatem quam rae optae sanihil incte occae nat aspedit ma sapiaut reperum.

Hello, this is a great headline.

SUBHEADING

Pudit omnis ipitam qui officie ndioria. Udignit ex experferio. Et enita corest esequatis quam qui cor aritam inciate mposandae porem elicimp oresequaepe reruptium aruptate veliqui di oditi sitatib uscium rem ulparum quatem quam rae optae sanihil incte occae nat aspedit ma sapiaut reperum.

Hello, this is a great headline.

SUBHEADING

Pudit omnis ipitam qui officie ndioria. Udignit ex experferio. Et enita corest esequatis quam qui cor aritam inciate mposandae porem elicimp oresequaepe reruptium aruptate veliqui di oditi sitatib uscium rem ulparum quatem quam rae optae sanihil incte occae nat aspedit ma sapiaut reperum.

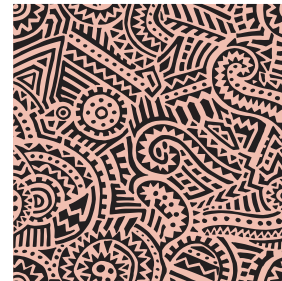
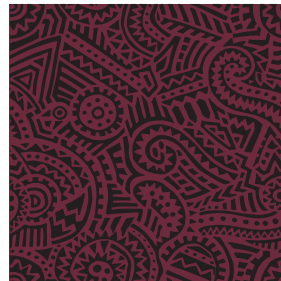
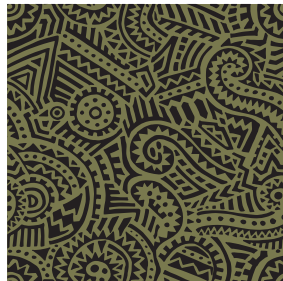
Graphic Devices: Sample LaVilla Pattern

Pattern that evokes the culture and energy of the LaVilla area. This pattern can be used in the background marketing elements to bring a sense of the area with color and movement.

LAVILLA PATTERN: PRIMARY COLORS



LAVILLA PATTERN: SECONDARY COLORS



Sample Application:
Banners

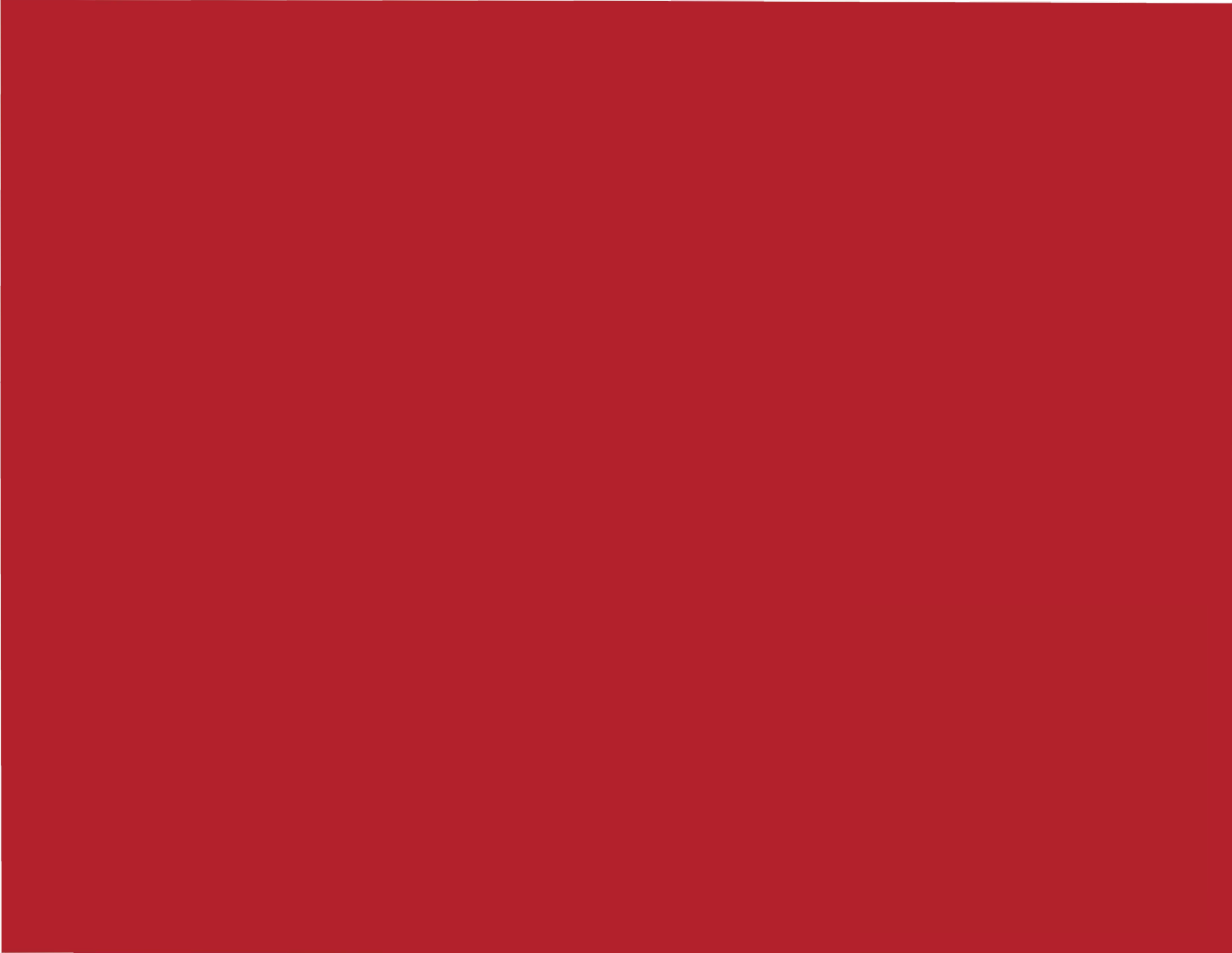


Sample Application:
Signage



Sample Application:
Tote Bag / Water Bottle / Hat





CityCenter Identity Guidelines

FEBRUARY 2022

CITYCENTER

Contents

2 INTRODUCTION

3 VISION

4 BRAND IDENTITY

4 Logo Mark

5 Logo Colors

6 Logo Clear Space & Minimum Size

7 Logo Misuses

8 Color Palette

9 Typography Headlines

11 Typography Body Copy

12 Typography: Hierarchy

13 Graphic Devices

14 BRAND APPLICATIONS

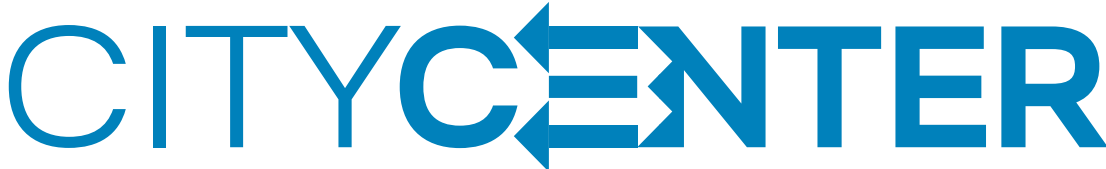
These guidelines are designed to help you maintain and protect the City Center brand identity. From our logo and color palette, to our typefaces and graphic treatments, everything you need to create engaging and cohesive communications is here.

City Center designs should be simple and intentional to avoid disrupting the style of historic architecture. Avoid heavy use of curved lines or overly-elegant designs. Being the center of Downtown, it is essential that design choices incorporate styles of other neighborhoods while complimenting the current architectural design of Jacksonville buildings. Signage could be metal, concrete, or brick.

I've got boundless energy. Resilient, I literally rose from the ashes. I'm a history buff; but live in the here and now. I love the hustle and bustle. And having friends, neighbors and out-of-towners over for a party where they can mix and mingle late into the night. You can find me at an outdoor concert one day, jet skiing on the river the next. I'm warm, welcoming, and up for anything.

Logo

City Center is energetic and moving all the time. We wanted a logo that expressed this movement that we are trying to always bring to the City Center community with arts, culture and entertainment. The font is bold and current that has longevity in design.

The logo for City Center is displayed in a bold, blue, sans-serif font. The word "CITY" is followed by a stylized "C" that contains a white arrow pointing to the left. This is followed by the word "ENTER" in the same font style. The entire logo is rendered in a vibrant blue color.

CITYCENTER

Logo Usage: Colors

PRIMARY COLOR

The primary logo colors are vibrant blue and medium yellow and are used depending on the communication.

PRIMARY COLOR: PANTONE 640

PRIMARY COLOR: PANTONE 130

REVERSE

The reverse logo is for use on darker backgrounds or photographs when using the full color logos it might compromise legibility.



CITYCENTER



CITYCENTER

REVERSE



Logo: Clear Space & Minimum Size

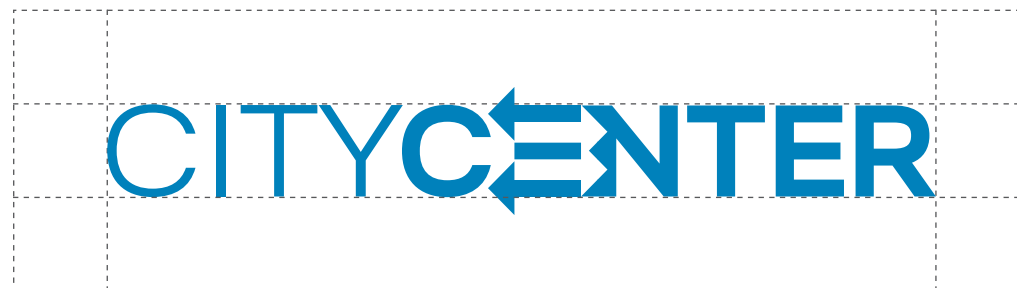
CLEAR SPACE

An area of clear space must surround our logo to protect its clarity and integrity. The clear space is equal to 1x the height of the 'c' in our logo. This is consistent no matter what size our logo is placed at. The boundary lines created by this area indicate the closest that our logo can come to other elements.

MINIMUM SIZE

Our logo should never appear smaller than 1.5" wide in printed form or 72 pixels wide in digital form. The minimum size is specified to ensure legibility.

CLEAR SPACE



MINIMUM SIZE



Logo Application: Misuses

Every element of our logo has been expertly crafted and should not be modified. Here are some examples to avoid when working with our logo.



BUSY BACKGROUNDS

The logo can be used on textured backgrounds and images, but always prioritize legibility of the logo. In some situations, using the reverse logo will create more visual contrast.

The 'CITYCENTER' logo where the 'CITY' is in a light pink color and 'CENTER' is in a dark red color. A red diagonal line is drawn across the logo from the top-left to the bottom-right, indicating this is a misuse.

COLOR

Do not manipulate the colors of the logo in any way.

The 'CITYCENTER' logo where the 'CITY' is in a light blue color and 'CENTER' is in a dark blue color. A red diagonal line is drawn across the logo from the top-left to the bottom-right, indicating this is a misuse.

FONT

Do not alter or change the logo font in anyway. The logo should always maintain type size relationships as defined in the logo.

The 'CITYCENTER' logo where the 'CITY' and 'CENTER' are separated and the 'C' in 'CENTER' is not connected to the 'Y' in 'CITY'. A red diagonal line is drawn across the logo from the top-left to the bottom-right, indicating this is a misuse.

LOCK-UP

Do not break the lock-up in any way. It must always be used with both "City" and "Center."

The 'CITYCENTER' logo with a soft, grey drop shadow behind it. A red diagonal line is drawn across the logo from the top-left to the bottom-right, indicating this is a misuse.

VISUAL EFFECTS

Do not apply any visual effects such as drop shadows, bevel/emboss, glow, blur, etc.

The 'CITYCENTER' logo where the letters are stretched horizontally. A red diagonal line is drawn across the logo from the top-left to the bottom-right, indicating this is a misuse.

SCALE

The logo should always be scaled proportionately. Do not stretch or condense the logo.

Color Palette

Our primary colors of vibrant blue and medium yellow lead our main communications.

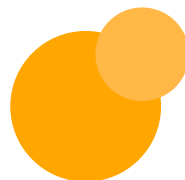
To increase the range of design options, our secondary colors can be used with our City Center collateral.

PRIMARY COLORS



PANTONE 640

CMYK: 100 35 14 1
RGB: 0 129 188
HEX#: 0081BC



PANTONE 130

CMYK: 2 38 100 0
RGB: 246 168 0
HEX#: F6A800

SECONDARY COLORS



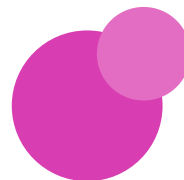
PANTONE 375

CMYK: 47 0 100 0
RGB: 148 214 0
HEX#: 94D600



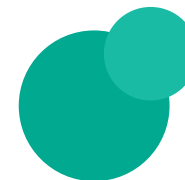
PANTONE 7417

CMYK: 4 85 85 0
RGB: 231 76 57
HEX#: E74C39



PANTONE 2385

CMYK: 21 85 0 0
RGB: 217 60 180
HEX#: D93CB4



PANTONE 3268

CMYK: 90 3 57 0
RGB: 0 169 144
HEX#: 00A990

Typography:
Headlines

PRIMARY HEADLINE FONT
OPTION 1

Brandon Grotesque Bold is a strong font that pairs well with the logo font but brings some softness with the rounded edges.

(ADOBE FONTS)

Brandon Grotesque Bold

AaBbCcDdEeFfGgHhIiJj

KkLlMmNnOoPpQqRrSs

TtUuVvWwXxYyZz

0123456789 (&?!/,:;~*")

Typography:
Headlines

PRIMARY HEADLINE FONT
OPTION 2

Semplicita Pro is a 21st century take on the seminal 1930 Nebiolo design that expertly replaced the cool Teutonic geometry of Futura with the warm, humanist, calligraphic letter forms characteristic of the Italian Renaissance.

(ADOBE FONTS)

Semplicita Pro
AaBbCcDdEeFfGgHhIijj
KkLlMmNnOoPpQqRrSs
TtUuVvWwXxYyZz
0123456789 (&?!/,:;-_*")

Light
abcdefghijklm
nopqrstuvwxyz
0123456789

Regular
abcdefghijklm
nopqrstuvwxyz
0123456789

SemiBold
abcdefghijklm
nopqrstuvwxyz
0123456789

Bold
abcdefghijklm
nopqrstuvwxyz
0123456789

Typography:
Body Copy

BODY COPY TYPEFACE

Forma DJR Display is a simple clean font that works well with the main logo font with its more condensed face that helps to contrast the extended nature of the logo.

(ADOBE FONTS)

Forma DJR Micro

AaBbCcDdEeFfGgHhIiJj

KkLlMmNnOoPpQqRrSs

TtUuVvWwXxYyZz

0123456789 (&!/,;'-*")

Light

abcdefghijklm
nopqrstuvwxyz
0123456789

Regular

abcdefghijklm
nopqrstuvwxyz
0123456789

Medium

abcdefghijklm
nopqrstuvwxyz
0123456789

Bold

abcdefghijklm
nopqrstuvwxyz
0123456789

Typography: Hierarchy

This shows simple combinations of fonts to create a clear hierarchy of information.

PRIMARY HEADLINE OPTION 1 (Brandon Grotesque Bold)

Hello, this is a great headline.

SUBHEADING

Pudit omnis ipitam qui officie ndioria. Udignit ex experferio.
Et enita corest esequatis quam qui cor aritam inciate
mposandae porem ellicimp oresequeaepe reruptium
aruptate veliqui di oditi sitatib uscium rem ulparum
quatem quam rae optae sanihil incte occae nat aspedit
ma sapiaut reperum.

PRIMARY HEADLINE OPTION 2 (Semplicita Pro)

Hello, this is a great headline.

SUBHEADING

Pudit omnis ipitam qui officie ndioria. Udignit ex experferio.
Et enita corest esequatis quam qui cor aritam inciate
mposandae porem ellicimp oresequeaepe reruptium
aruptate veliqui di oditi sitatib uscium rem ulparum
quatem quam rae optae sanihil incte occae nat aspedit
ma sap

Hello, this is a great headline.

SUBHEADING

Pudit omnis ipitam qui officie ndioria. Udignit ex experferio.
Et enita corest esequatis quam qui cor aritam inciate
mposandae porem ellicimp oresequeaepe reruptium aruptate
veliqui di oditi sitatib uscium rem ulparum quatem quam rae
optae sanihil incte occae nat aspedit ma sapiaut reperum.

Hello, this is a great headline.

SUBHEADING

Pudit omnis ipitam qui officie ndioria. Udignit ex experferio.
Et enita corest esequatis quam qui cor aritam inciate
mposandae porem ellicimp oresequeaepe reruptium
aruptate veliqui di oditi sitatib uscium rem ulparum
quatem quam rae optae sanihil incte occae nat aspedit
ma sap

Graphic Devices: Sample City Center Pattern

Pattern that evokes the culture and energy of the City Center area. This pattern can be used in the background marketing elements to bring a sense of the area with color and movement.

CITY CENTER PATTERN: PRIMARY COLORS



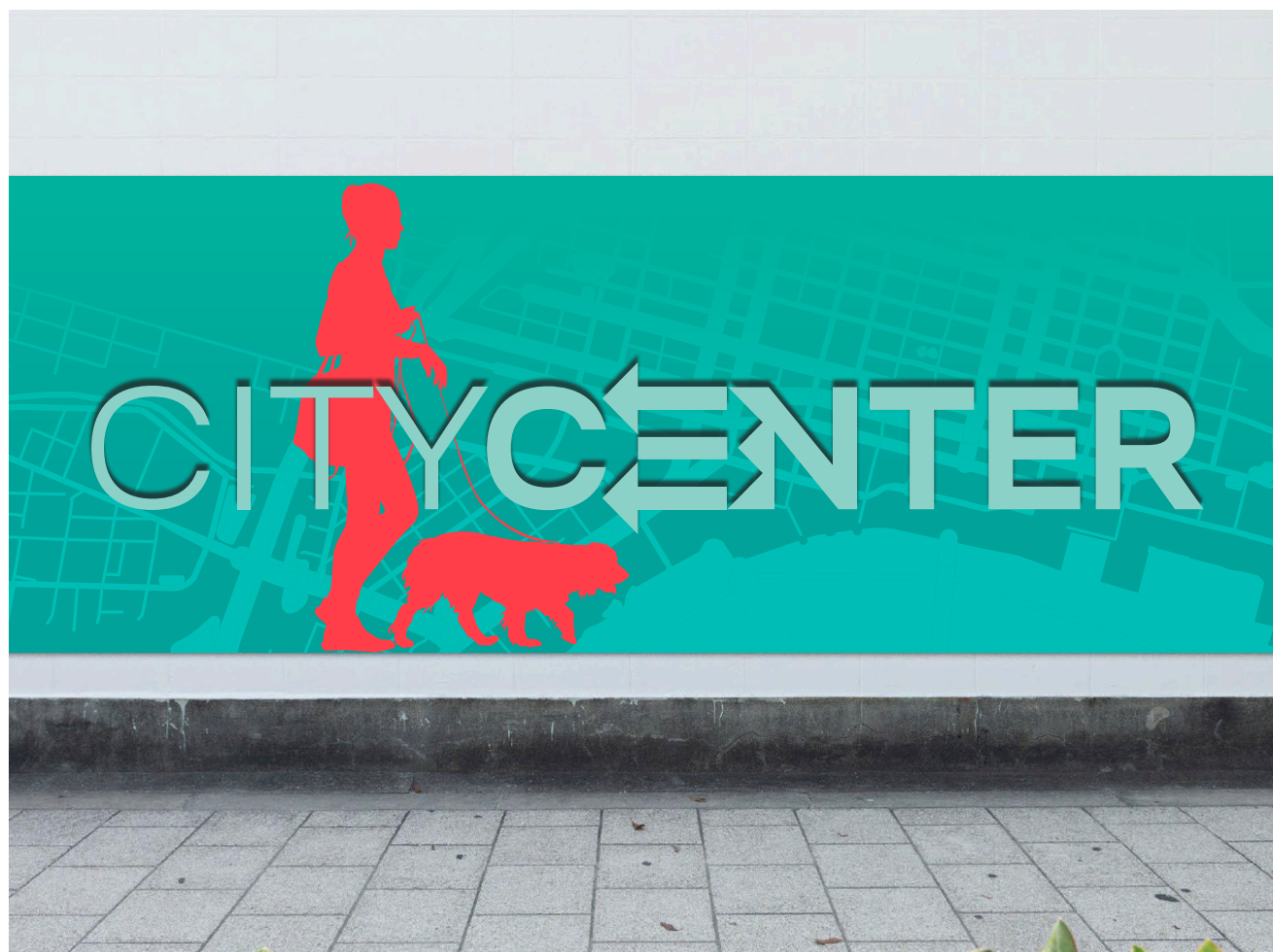
CITY CENTER PATTERN: SECONDARY COLORS



Sample Application:
Banners



Sample Application:
Signage



Sample Application:
Tote Bag / Water Bottle / Hat



CITYCENTER

SouthBank Identity Guidelines

FEBRUARY 2022

south
bank

Contents

2 INTRODUCTION

3 VISION

4 BRAND IDENTITY

4 Logo Mark

5 Logo Colors

6 Logo Clear Space & Minimum Size

7 Logo Misuses

8 Color Palette

9 Typography Headlines

11 Typography Body Copy

12 Typography: Hierarchy

13 Graphic Devices

14 BRAND APPLICATIONS

These guidelines are designed to help you maintain and protect the SouthBank brand identity. From our logo and color palette, to our typefaces and graphic treatments, everything you need to create engaging and cohesive communications is here.

Southbank design should follow a modern/futuristic style. This design is mainly characterized by strong chromaticism, long dynamic lines, suggesting motion, urgency, and lyricism. Materials like metal, plastic, and glass should be incorporated. Designs, colors, and lines should reflect audacity, movement and speed. A free and uninhibited approach should be taken.

I'm active, positive and with the majestic St. Johns River, I enjoy life to the fullest. I feel connected with my downtown neighbors as well as my neighbors in San Marco to the south. I love taking walks along the river with families, singles, and hotel guests alike. I'm turning into a bit of a foodie too. I am a picture of health with the nation's' top medical campus right here.

Logo

The SouthBank logo is a flow of lines that represent our wonderful blue river that flows through the heart of our city. The SouthBank is part of this river so the logo needs to of the same motion.

The logo consists of the words "south" and "bank" in a blue, lowercase, sans-serif font. The letters are connected in a way that suggests a continuous flow, with the 's' in "south" overlapping the 'b' in "bank".

south
bank

Logo Usage: Colors

PRIMARY COLOR

The primary logo colors are deep blue and light blue and are used depending on the communication.

REVERSE

The reverse logo is for use on darker backgrounds or photographs when using the full color logos it might compromise legibility.

PRIMARY COLOR: PANTONE 2945

The SouthBank logo is displayed in a deep blue color. The word "south" is positioned above "bank", with the letter 'o' in "south" overlapping the letter 'b' in "bank".

PRIMARY COLOR: PANTONE 318

The SouthBank logo is displayed in a light blue color. The word "south" is positioned above "bank", with the letter 'o' in "south" overlapping the letter 'b' in "bank".

REVERSE

The SouthBank logo is displayed in white text on a solid black square background. The word "south" is positioned above "bank", with the letter 'o' in "south" overlapping the letter 'b' in "bank".

Logo: Clear Space & Minimum Size

CLEAR SPACE

An area of clear space must surround our logo to protect its clarity and integrity. The clear space is equal to 1x the height of the 'v c' in our logo. This is consistent no matter what size our logo is placed at. The boundary lines created by this area indicate the closest that our logo can come to other elements.

MINIMUM SIZE

Our logo should never appear smaller than 1.5" wide in printed form or 72 pixels wide in digital form. The minimum size is specified to ensure legibility.

CLEAR SPACE



MINIMUM SIZE



Logo Application: Misuses

Every element of our logo has been expertly crafted and should not be modified. Here are some examples to avoid when working with our logo.



BUSY BACKGROUNDS

The logo can be used on textured backgrounds and images, but always prioritize legibility of the logo. In some situations, using the reverse logo will create more visual contrast.



COLOR

Do not manipulate the colors of the logo in any way.



FONT

Do not alter or change the logo font in anyway. The logo should always maintain type size relationships as defined in the logo.



LOCK-UP

Do not break the lock-up in any way. It must always be used with both "South" and "Bank."



VISUAL EFFECTS

Do not apply any visual effects such as drop shadows, bevel/emboss, glow, blur, etc.



SCALE

The logo should always be scaled proportionately. Do not stretch or condense the logo.

Color Palette

Our primary colors of deep blue and light blue lead our main communications.

To increase the range of design options, our secondary colors can be used with our SouthBank collateral.

PRIMARY COLORS

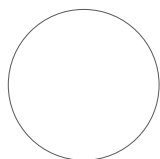


PANTONE 2945
CMYK: 100 73 20 5
RGB: 0 75 152
HEX#: 004b98

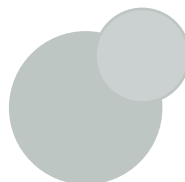


PANTONE 318
CMYK: 44 0 15 0
RGB: 133 218 223
HEX#: 85DADF

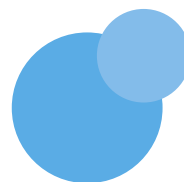
SECONDARY COLORS



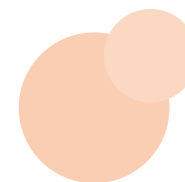
PANTONE WHITE
CMYK: 0 0 0 0
RGB: 255 255 255
HEX#: FFFFFFFF



PANTONE 441
CMYK: 27 15 20 0
RGB: 188 199 196
HEX#: BCC7C4



PANTONE 284
CMYK: 55 21 0 0
RGB: 107 171 229
HEX#: 6BABE5



PANTONE 475
CMYK: 3 19 28 0
RGB: 243 208 179
HEX#: F3D0B3

Typography:
Headlines

PRIMARY HEADLINE FONT
OPTION 1

New Order Semibold is a clean complementary font that works well with the logo font and keeps the flow and motion of the river in its form. (ADOBE FONTS)

New Order Semibold

AaBbCcDdEeFfGgHhIiJj

KkLlMmNnOoPpQqRrSs

TtUuVvWwXxYyZz

0123456789 (&?!/,:;-_*")

Typography: Headlines

PRIMARY HEADLINE FONT OPTION 2

Europa is a modern sans serif combining geometric reduction and humanistic vitality. Despite the distinct geometrical touch and characterful roughness, it can be used for both text and headline purposes, due to optical modulation rather than metrical construction. Its name refers to the inspirational origins, two popular European typefaces: the geometrical Futura and the humanistic Gill Sans. (ADOBE FONTS)

Europa
AaBbCcDdEeFfGgHhIiJj
KkLlMmNnOoPpQqRrSs
TtUuVvWwXxYyZz
0123456789 (&?!/,:;-_*")

Light
abcdefghijklm
nopqrstuvwxyz
0123456789

Regular
abcdefghijklm
nopqrstuvwxyz
0123456789

Bold
abcdefghijklm
nopqrstuvwxyz
0123456789

Typography:
Body Copy

BODY COPY TYPEFACE

Graphie is a modern geometric sans-serif. Their clear-cut-corner, vibrant straight lines and large x-heights give them legibility, readability and keenness.

(ADOBE FONTS)

Graphie Regular

AaBbCcDdEeFfGgHhIiJj

KkLlMmNnOoPpQqRrSs

TtUuVvWwXxYyZz

0123456789 (&!/,,:;-_*'")

Light

abcdefghijklm
nopqrstuvwxyz
0123456789

Regular

abcdefghijklm
nopqrstuvwxyz
0123456789

Medium

abcdefghijklm
nopqrstuvwxyz
0123456789

Bold

abcdefghijklm
nopqrstuvwxyz
0123456789

Typography: Hierarchy

This shows simple combinations of fonts to create a clear hierarchy of information.

PRIMARY HEADLINE OPTION 1 (New Order Semibold)

Hello, this is a great headline.

SUBHEADING

Pudit omnis ipitam qui officie ndioria. Udignit ex experferio. Et enita corest esequatis quam qui cor aritam inciate mposandae porem elicimp oresequaepe reruptium aruptate veliqui di oditi sitatib uscium rem ulparum quatem quam rae optae sanihil incte occae nat aspedit ma sapiaut reperum.

PRIMARY HEADLINE OPTION 2 (Europa)

Hello, this is a great headline.

SUBHEADING

Pudit omnis ipitam qui officie ndioria. Udignit ex experferio. Et enita corest esequatis quam qui cor aritam inciate mposandae porem elicimp oresequaepe reruptium aruptate veliqui di oditi sitatib uscium rem ulparum quatem quam rae optae sanihil incte occae nat aspedit ma sap

Hello, this is a great headline.

SUBHEADING

Pudit omnis ipitam qui officie ndioria. Udignit ex experferio. Et enita corest esequatis quam qui cor aritam inciate mposandae porem elicimp oresequaepe reruptium aruptate veliqui di oditi sitatib uscium rem ulparum quatem quam rae optae sanihil incte occae nat aspedit ma sapiaut reperum.

Hello, this is a great headline.

SUBHEADING

Pudit omnis ipitam qui officie ndioria. Udignit ex experferio. Et enita corest esequatis quam qui cor aritam inciate mposandae porem elicimp oresequaepe reruptium aruptate veliqui di oditi sitatib uscium rem ulparum quatem quam rae optae sanihil incte occae nat aspedit ma sap

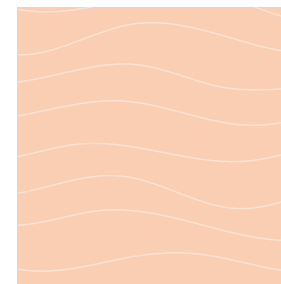
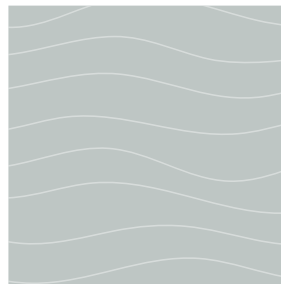
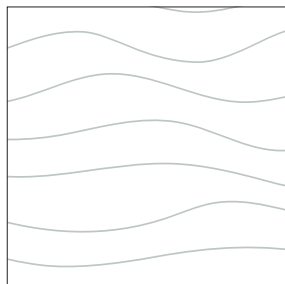
Graphic Devices: Sample SouthBank Pattern

Pattern that evokes the culture and energy of the SouthBank area. This pattern can be used in the background marketing elements to bring a sense of the area with color and movement.

SOUTHBANK PATTERN: PRIMARY COLORS



SOUTHBANK PATTERN: SECONDARY COLORS



Sample Application:
Banners



Sample Application:
Signage



Sample Application:
Tote Bag / Water Bottle / Hat



south
bank

Cathedral Hill Identity Guidelines

JUNE 2021

Cathedral
HILL

Contents

2 INTRODUCTION

3 VISION

4 BRAND IDENTITY

4 Logo Mark

5 Logo Colors

6 Logo Clear Space & Minimum Size

7 Logo Misuses

8 Color Palette

9 Typography Headlines

11 Typography Body Copy

12 Typography: Hierarchy

13 Graphic Devices

15 BRAND APPLICATIONS

These guidelines are designed to help you maintain and protect the Cathedral Hill brand identity. From our logo and color palette, to our typefaces and graphic treatments, everything you need to create engaging and cohesive communications is here.

Cathedral Hill should follow a gothic design style. Gothic style is defined by light and ornate design. Signage should feature turned legs, arched design, and carved details. It should be made from iron, cast iron, or solid wood for effect. Stained glass and arches are a staple of gothic style. Any design or signage should compliment the historic buildings.

I am kind and comfortable. I feel connected to faith, friends, and city. I am open to everyone and welcome families, children, and seniors of all faiths and backgrounds to come see my cathedrals and churches with my spires reaching skyward. I am known and visited for my peaceful spaces, and an unexpected connection to nature. I am community-focused and have a wise, gentle nature.”

Logo

The Cathedral Hill logo is the most visible representation of our brand. It is crafted in a strong slab-serif font, giving it an established and trustworthy presence.

Cathedral
HILL

Logo Usage: Colors

PRIMARY COLOR

The primary logo colors are purple and green and are used depending on the communication.

REVERSE

The reverse logo is for use on darker backgrounds or photographs when using the full color logos might compromise legibility.

PRIMARY COLOR: PANTONE 2685

Cathedral
HILL

PRIMARY COLOR: PANTONE 369

Cathedral
HILL

REVERSE



Logo: Clear Space & Minimum Size

CLEAR SPACE

An area of clear space must surround our logo to protect its clarity and integrity. The clear space is equal to 1.5x the height of the 'l' in our logo. This is consistent no matter what size our logo is placed at. The boundary lines created by this area indicate the closest that our logo can come to other elements.

MINIMUM SIZE

Our logo should never appear smaller than 1" wide in printed form or 72 pixels wide in digital form. The minimum size is specified to ensure legibility.

CLEAR SPACE



MINIMUM SIZE



Logo Application: Misuses

Every element of our logo has been expertly crafted and should not be modified. Here are some examples to avoid when working with our logo.



BUSY BACKGROUNDS

The logo can be used on textured backgrounds and images, but always prioritize legibility of the logo. In some situations, using the reverse logo will create more visual contrast.

The logo 'Cathedral HILL' is shown with 'Cathedral' in a light blue color and 'HILL' in a darker blue color. A red diagonal line is drawn across the logo to indicate this is a misuse of the logo.

COLOR

Do not manipulate the colors of the logo in any way.

The logo 'Cathedral HILL' is shown with 'Cathedral' in a bold, sans-serif font and 'HILL' in a smaller, spaced-out font. A red diagonal line is drawn across the logo to indicate this is a misuse of the logo.

FONT

Do not alter or change the logo font in anyway. The logo should always maintain type size relationships as defined in the logo.

The logo 'Cathedral HILL' is shown with 'Cathedral' in a bold, sans-serif font and 'HILL' in a smaller, spaced-out font. A red diagonal line is drawn across the logo to indicate this is a misuse of the logo.

LOCK-UP

Do not break the lock-up in any way. It must always be used with both "South" and "Bank."

The logo 'Cathedral HILL' is shown with a drop shadow effect behind the text. A red diagonal line is drawn across the logo to indicate this is a misuse of the logo.

VISUAL EFFECTS

Do not apply any visual effects such as drop shadows, bevel/emboss, glow, blur, etc.

The logo 'Cathedral HILL' is shown with 'Cathedral' in a large font and 'HILL' in a smaller font. A red diagonal line is drawn across the logo to indicate this is a misuse of the logo.

SCALE

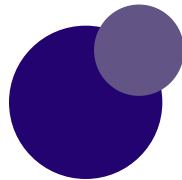
The logo should always be scaled proportionately. Do not stretch or condense the logo.

Color Palette

Our primary colors of purple and green lead our main communications.

To increase the range of design options, our secondary colors can be used with our Leaf Pattern.

PRIMARY COLORS



PANTONE 2685

CMYK: 97 100 0 19
RGB: 51 0 114
HEX#: 330072



PANTONE 369

CMYK: 58 0 100 4
RGB: 100 167 11
HEX#: 64A70B

SECONDARY COLORS



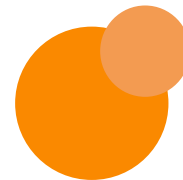
PANTONE 7636

CMYK: 0 100 44 14
RGB: 188 32 75
HEX#: BC204B



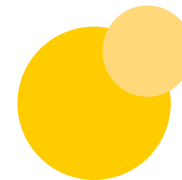
PANTONE 2935

CMYK: 100 63 0 2
RGB: 0 87 183
HEX#: 0057B7



PANTONE 144

CMYK: 0 49 100 0
RGB: 237 139 0
HEX#: ED8B00



PANTONE 116

CMYK: 0 10 98 0
RGB: 255 205 0
HEX#: FFCD00

Typography: Headlines

PRIMARY HEADLINE FONT OPTION 1

Monroe Bold is a contemporary slab-serif font designed. The strong block-shaped serifs give this font the prominence needed for impactful headlines.

Monroe Bold

AaBbCcDdEeFfGgHhIiJj

KkLlMmNnOoPpQqRrSs

TtUuVvWwXxYyZz

0123456789 (&?!/,:;-_*")

Typography: Headlines

PRIMARY HEADLINE FONT OPTION 2

Antique Olive Medium is a more subdued option for our headlines. If the length of headline used is longer than average and/or if the communication tends to be long in format (ie. annual reports, research documents, etc) Antique Olive may be a better choice than Monroe.

Antique Olive Medium

AaBbCcDdEeFfGgHhIiJj

KkLlMmNnOoPpQqRrSs

TtUuVvWwXxYyZz

0123456789 (&!/,;:_*"")

Light

abcdefghijklm
nopqrstuvwxyz
0123456789

Regular

abcdefghijklm
nopqrstuvwxyz
0123456789

Medium

abcdefghijklm
nopqrstuvwxyz
0123456789

Bold

**abcdefghijklm
nopqrstuvwxyz
0123456789**

Typography: Body Copy

BODY COPY TYPEFACE

Antique Olive is our choice for our text typeface. There are 4 weights that can be used to create a hierarchy of fonts for clear communications.

Antique Olive Medium

AaBbCcDdEeFfGgHhIiJj

KkLlMmNnOoPpQqRrSs

TtUuVvWwXxYyZz

0123456789 (&?!/ ,:; - _ * ")

Light

abcdefghijklm
nopqrstuvwxyz
0123456789

Regular

abcdefghijklm
nopqrstuvwxyz
0123456789

Medium

abcdefghijklm
nopqrstuvwxyz
0123456789

Bold

**abcdefghijklm
nopqrstuvwxyz
0123456789**

Typography: Hierarchy

This shows simple combinations of fonts to create a clear hierarchy of information.

PRIMARY HEADLINE OPTION 1 (MONROE)

Hello, this is a great headline.

SUBHEADING

Pudit omnis ipitam qui officie ndioria. Udignit ex experferio. Et enita corest esequatis quam qui cor aritam inciate mposandae porem elicimp oresequaepe reruptium aruptate veliqui di oditi sitatib uscium rem ulparum quatem quam rae optae sanihil incte occae nat aspedit ma sapit aut reperum.

PRIMARY HEADLINE OPTION 2 (ANTIQUUE OLIVE)

Hello, this is a great headline.

SUBHEADING

Pudit omnis ipitam qui officie ndioria. Udignit ex experferio. Et enita corest esequatis quam qui cor aritam inciate mposandae porem elicimp oresequaepe reruptium aruptate veliqui di oditi sitatib uscium rem ulparum quatem quam rae optae sanihil incte occae nat aspedit ma sapit aut reperum.

Hello, this is a great headline.

SUBHEADING

Pudit omnis ipitam qui officie ndioria. Udignit ex experferio. Et enita corest esequatis quam qui cor aritam inciate mposandae porem elicimp oresequaepe reruptium aruptate veliqui di oditi sitatib uscium rem ulparum quatem quam rae optae sanihil incte occae nat aspedit ma sapit aut reperum.

Hello, this is a great headline.

SUBHEADING

Pudit omnis ipitam qui officie ndioria. Udignit ex experferio. Et enita corest esequatis quam qui cor aritam inciate mposandae porem elicimp oresequaepe reruptium aruptate veliqui di oditi sitatib uscium rem ulparum quatem quam rae optae sanihil incte occae nat aspedit ma sapit aut reperum.

Graphic Devices: Cathedral-scape

Our Cathedral-scape element is a visual representation of our neighborhood. When paired with our Leaf Pattern it gives a feeling of a calm, yet impressive area to visit and live in Jacksonville.



Graphic Devices: Leaf Pattern

Our Leaf Pattern is the visual representation of our tree-lined streets and neighborly feel. When paired with our Cathedral-scape device, it gives our residents and visitors a clear idea of what our neighborhood is all about.

LEAF PATTERN: PRIMARY COLORS



LEAF PATTERN: SECONDARY COLORS



Sample Application: Banners



Sample Application: Billboards



**Sample Application:
Tote Bag**



Cathedral
HILL



117 West Duval Street #310
Jacksonville, FL 32202
904-255-5302