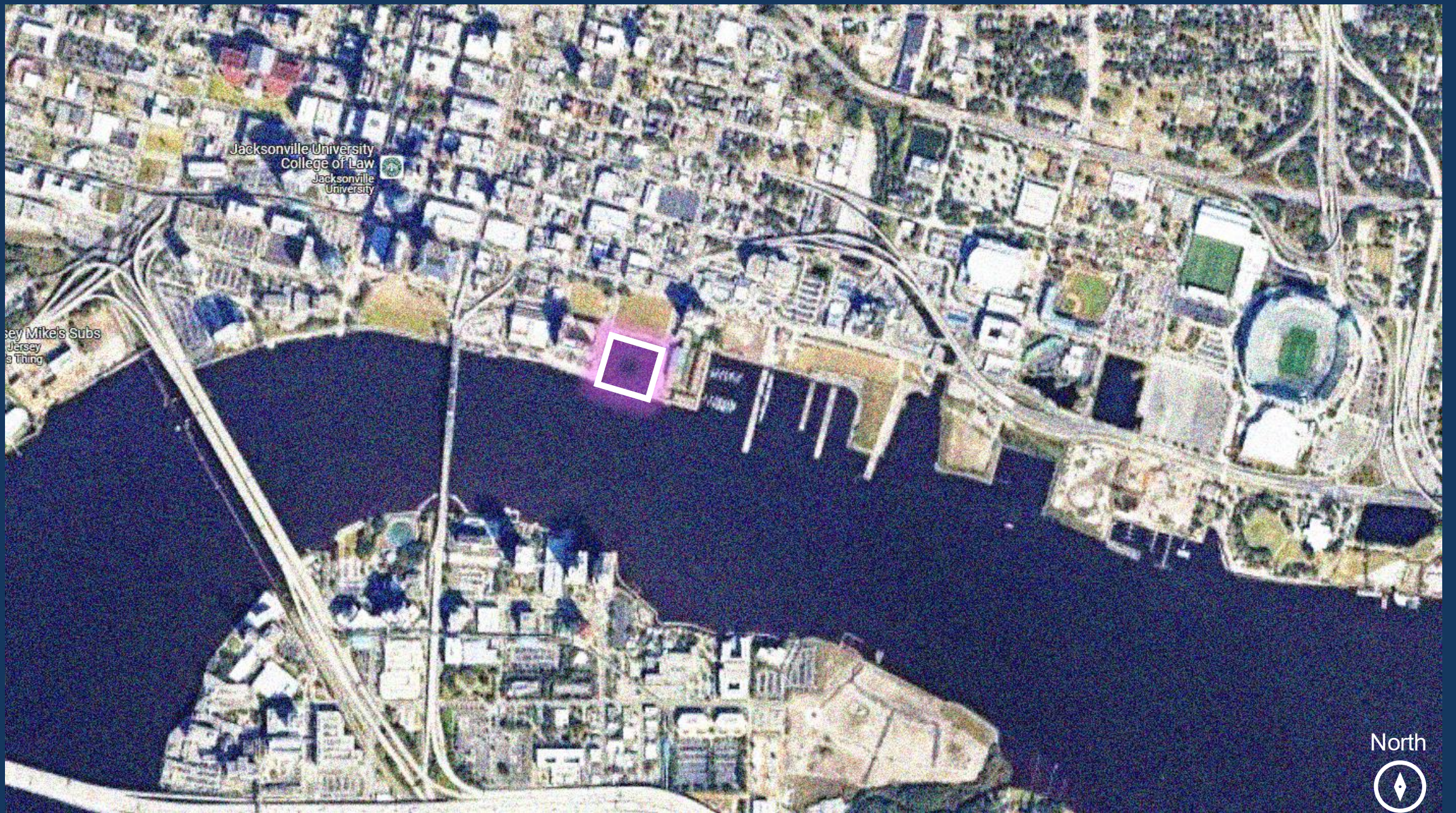




Liberty Street Marina | Schematic Design Update





Riverfront Plaza
Development

Main St. Bridge

Hyatt
Regency

Future Ford on Bay
Development
New Riverwalk
(Courthouse Dr.)

Market St.

Liberty St.

The Plaza
Condominium
s

Shipyards West
Development

North



View of Marina Site Looking North



View of Marina Site Looking West



View of Marina Site Looking East



Corner of Liberty St. & Courthouse Dr.



View of Site from SE Corner



View of Site from SW Corner

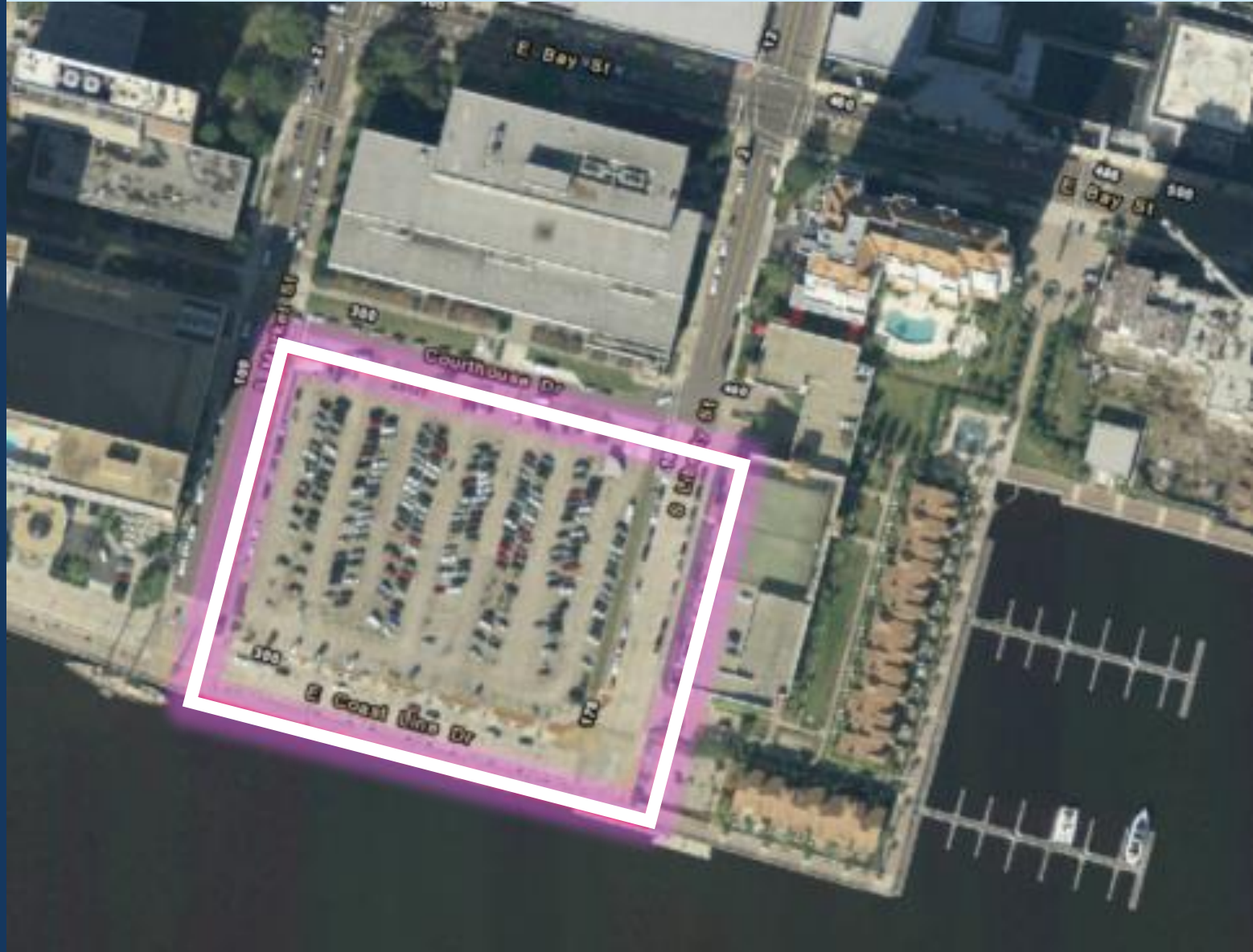


Corner of Market St. & Courthouse Dr.



Historical Background

- Structural Platform for parking lot and South Liberty Street.
- Structural failures in 2010, 2012, and 2015.
- Demolition in 2017-2018
- Adjacent Duval County Courthouse demolished in 2019
- Repaired Liberty Street reopened in 2020
- Planned for future Marina in former parking lot location



Program Scope

- New infill Marina to replace demolished structural parking lot over water
- Provision for transient and commercial boats (tour boats & rentals)
- Harbormaster House w/ office, restrooms, showers, laundry
- Water Taxi landing dock



SCALE: 1" = 30'

[illegible]

| | |
|-----------------|----------|
| PROJECT MANAGER | HAC |
| DESIGNED BY | SM |
| CHECKED BY | SM |
| DRAWN BY | JLH |
| | - |
| | - |
| | - |
| | - |
| PROJECT NUMBER | 10358953 |

DRAFT



**CITY OF JACKSONVILLE
LIBERTY STREET MARINA
PROPOSED MARINA LAYOUT
PACKAGE 3**

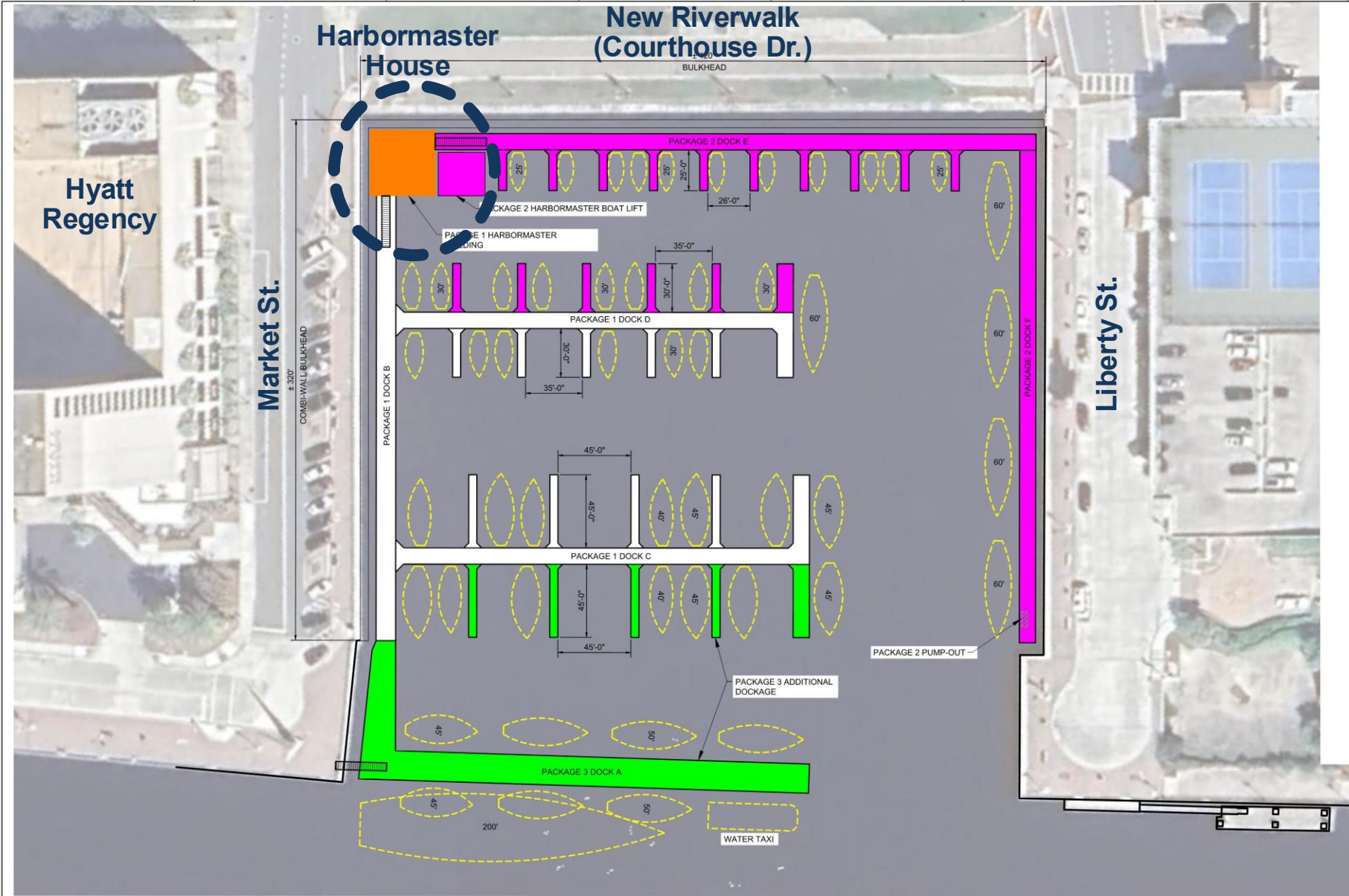


| | |
|----------|----------|
| FILENAME | S100.DWG |
| SCALE | AS SHOWN |

SHEET

FIG 4

Plot Time: Tuesday, November 12, 2024 - 10:47am Plotted by: JEBEL
File Name: Y:\City of Jacksonville\Liberty Street Marina\03_SHEET FILES\LIB ST MARINA PHASE 3.dwg Layout Name: Plot (2)



- PACKAGE 1
- PACKAGE 2
- PACKAGE 3

PACKAGE 3
± 79 SLIPS



SCALE: 1" = 30'
0 15' 30' 45' 60' 90'



| ISSUE | DATE | DESCRIPTION |
|-------|------|-------------|
| | | |
| | | |
| | | |
| | | |
| | | |
| | | |
| | | |
| | | |
| | | |

| | |
|-----------------|----------|
| PROJECT MANAGER | HAC |
| DESIGNED BY | SM |
| CHECKED BY | SM |
| DRAWN BY | JLH |
| | |
| | |
| | |
| PROJECT NUMBER | 10358953 |

DRAFT



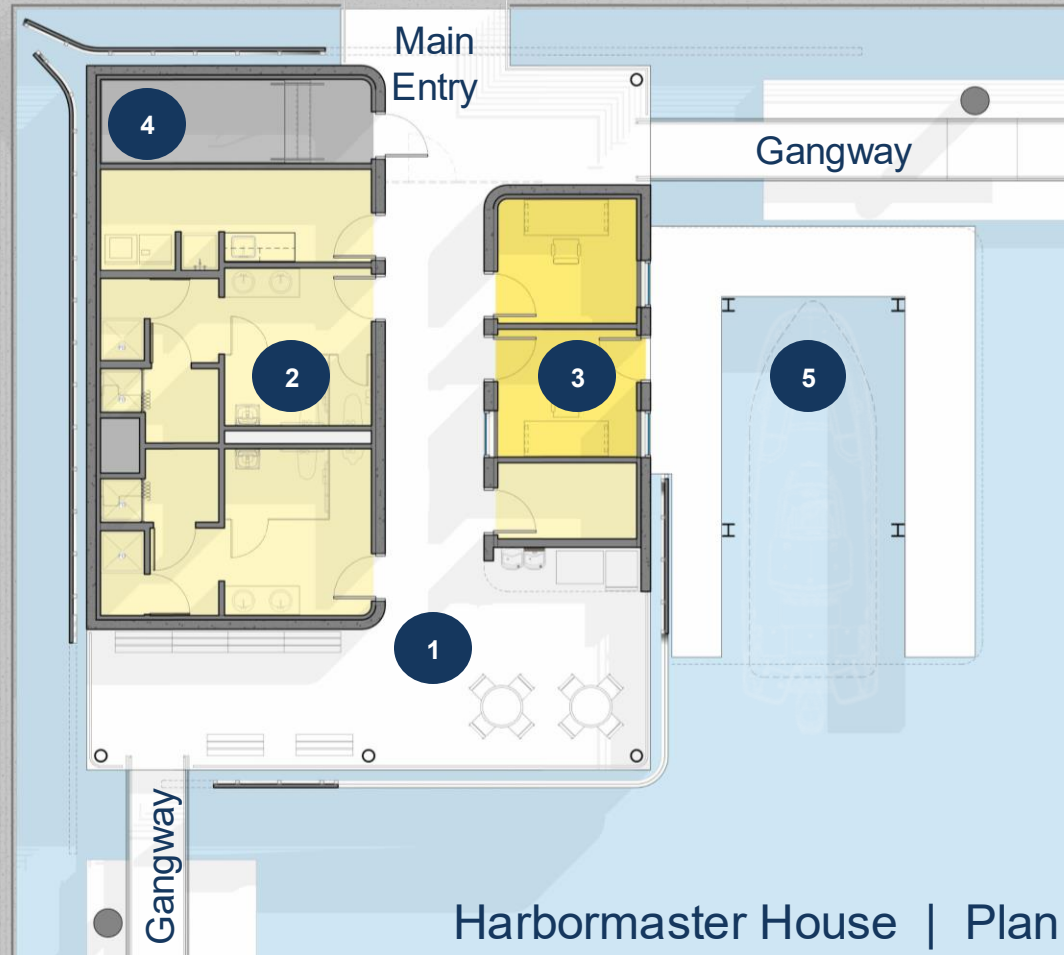
CITY OF JACKSONVILLE
LIBERTY STREET MARINA
PROPOSED MARINA LAYOUT
PACKAGE 3

0 1" 2"

FILENAME S100.DWG
SCALE AS SHOWN

SHEET
FIG 4

New Riverwalk (Courthouse Dr.)



Harbormaster House | Plan

1. CIRCULATION
 - Entry / Breezeway
 - Seating Area / Vending
2. SUPPORT
 - Women's Restroom / Shower
 - Men's Restroom / Shower
 - Laundry / Custodial
 - Storage
3. ADMINISTRATION
 - Harbormaster Office
 - Office
4. SERVICE
 - Electrical / Data
5. BOAT LIFT

Goals & Objectives

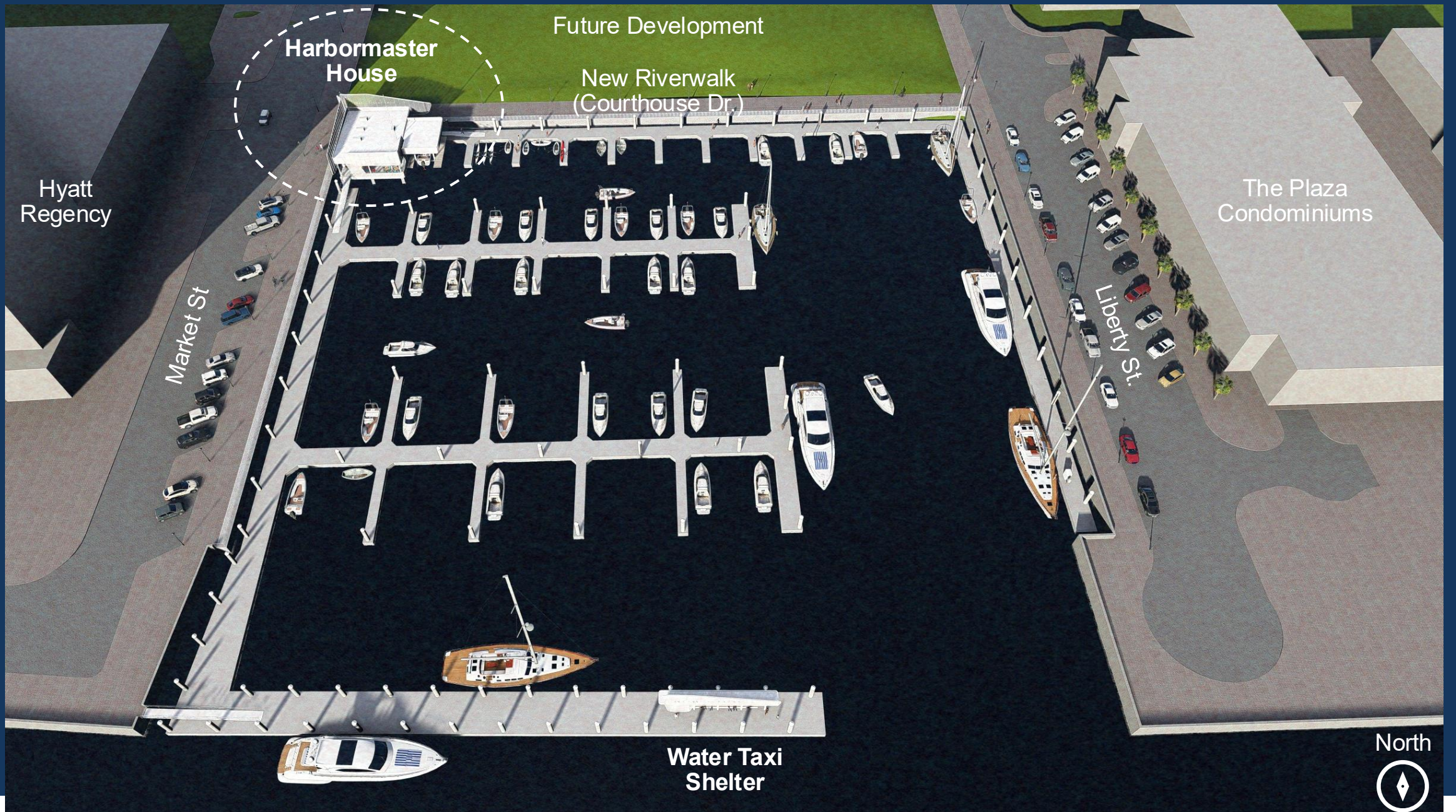
- Meet the Program Requirements:
- Enhance & Activate the Riverfront and Downtown Jax
- Reinforce the Urban setting with Contextual Design (not suburban)
- Create a Jax Destination along the Riverwalk
- Improve the Ford on Bay development attractiveness

Goals & Objectives

- Meet the Program Requirements:
- Enhance & Activate the Riverfront and Downtown Jax
- Reinforce the Urban setting with Contextual Design (not suburban)
- Create a Jax Destination along the Riverwalk
- Improve the Ford on Bay development attractiveness
- Make the Marina a memorable, urban, destination Landmark

Downtown Landmarks







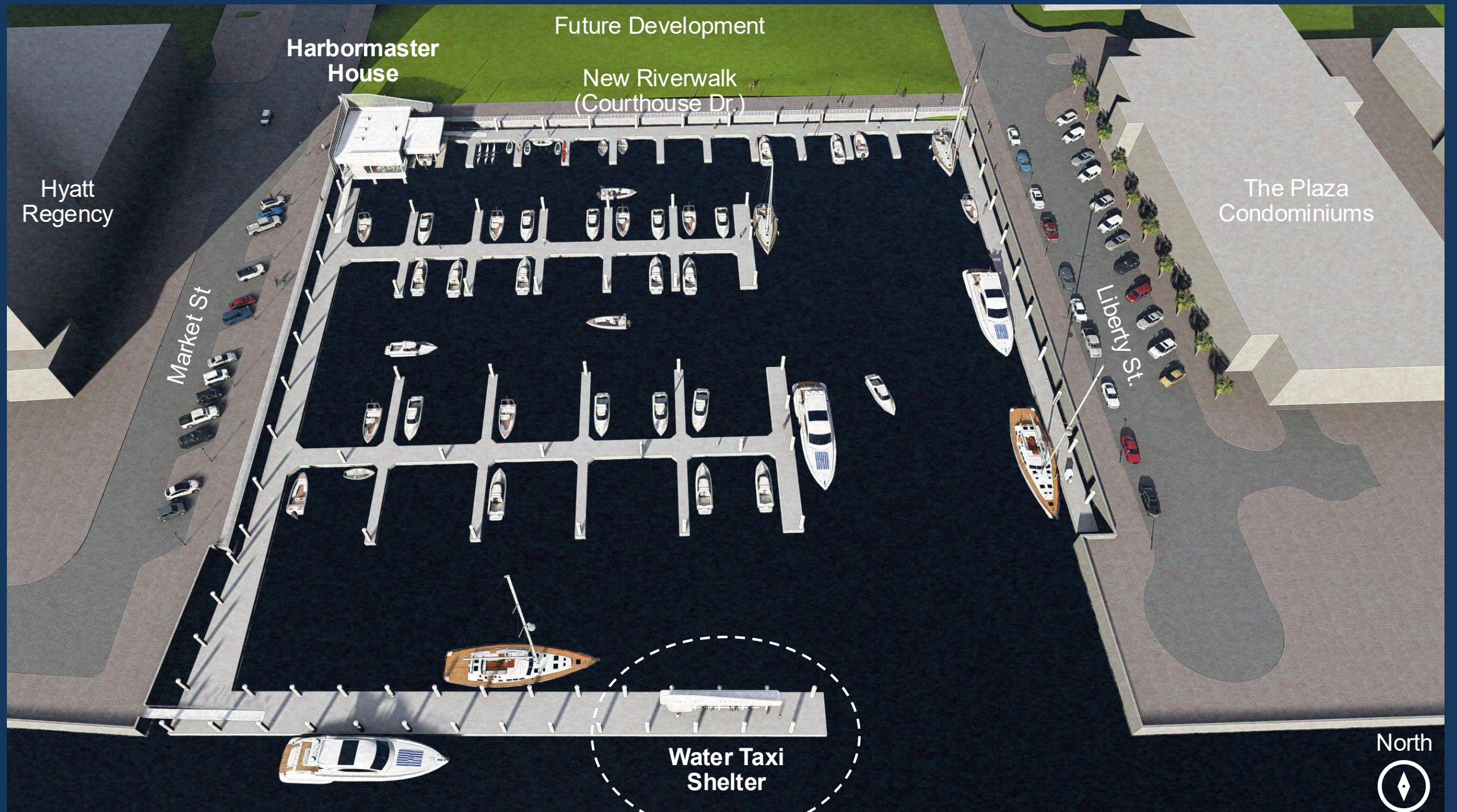
Harbormaster House | Corner of Market St. & Courthouse Dr.



Harbormaster House | Corner of Market St. & Courthouse Dr.









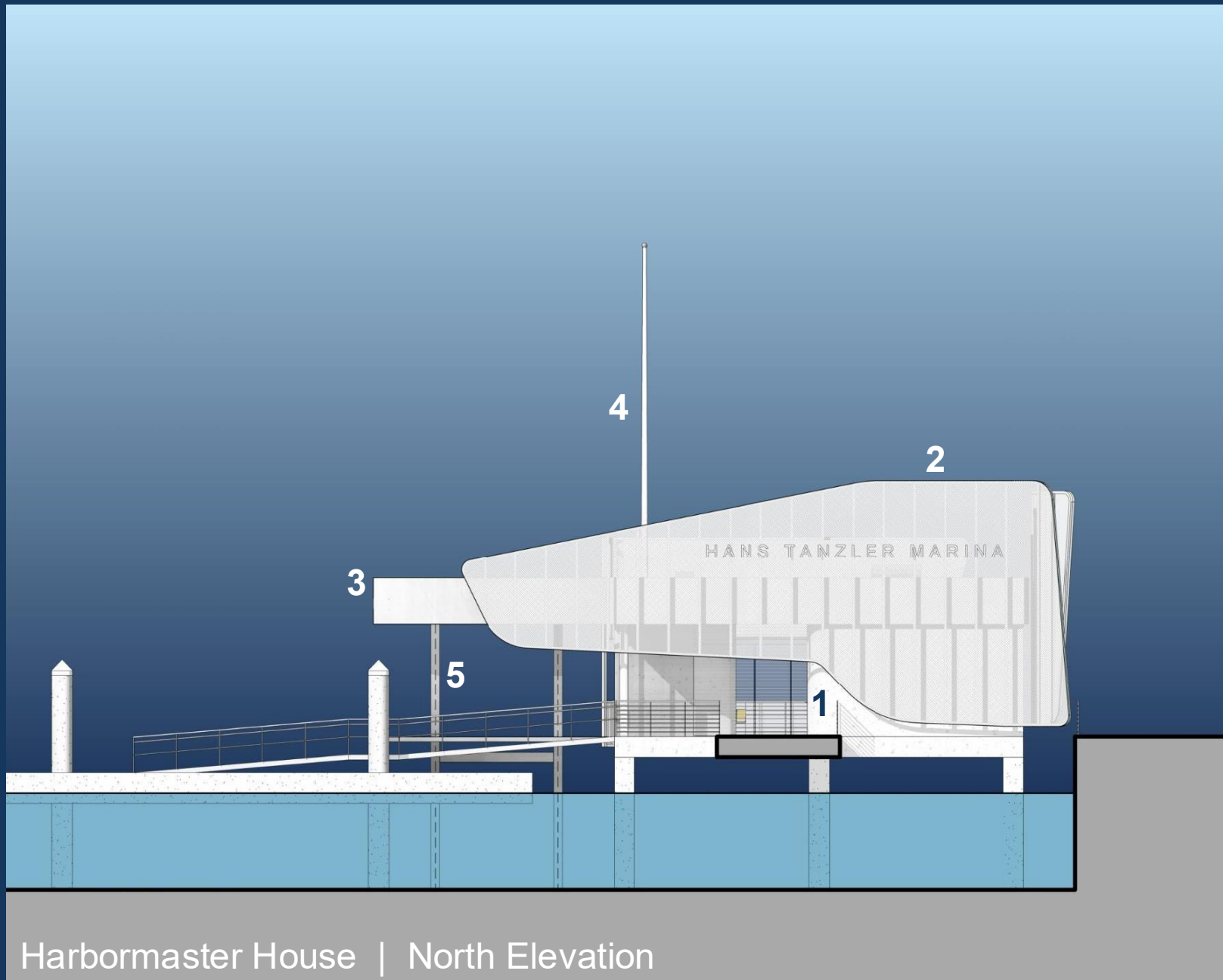
Water Taxi Shelter



Main St.
Bridge

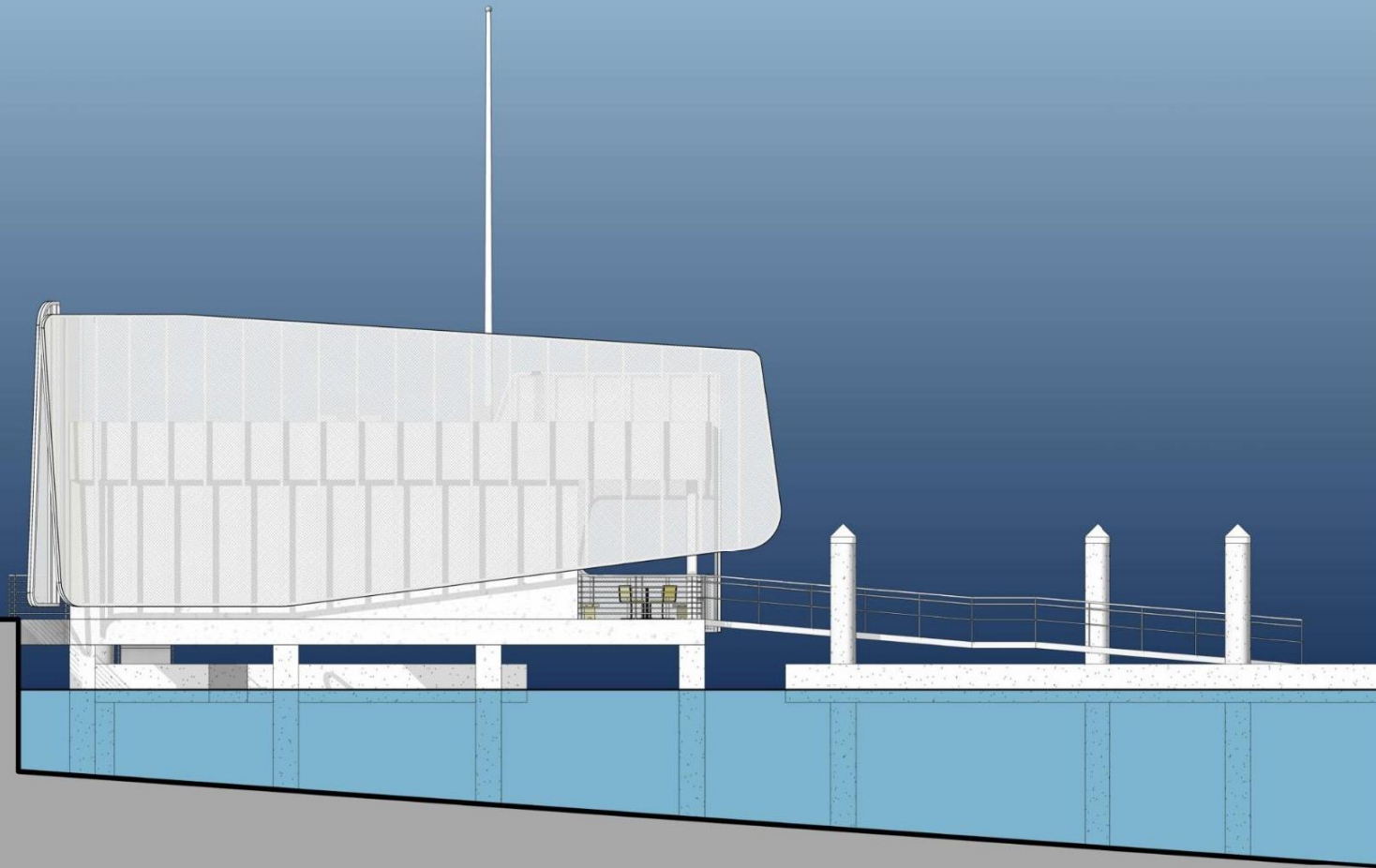
Harbormaster
House

Water Taxi Shelter

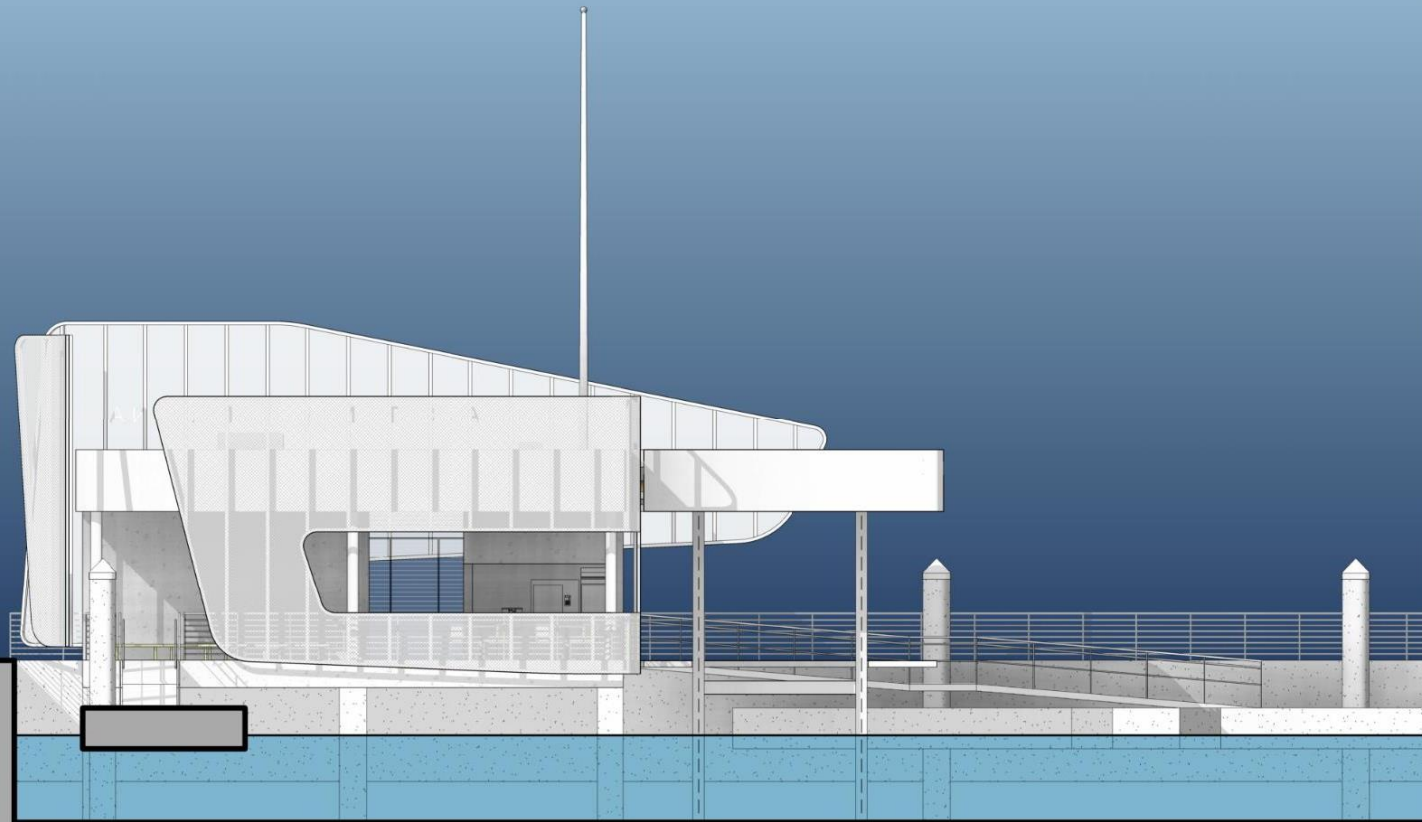


1. Cast-in-place Concrete with Coating
2. Screen Wall with Coated Steel Frame
3. Composite Metal Panel
4. Aluminum Pole Marker
5. Galvanized Steel Framing with Coating

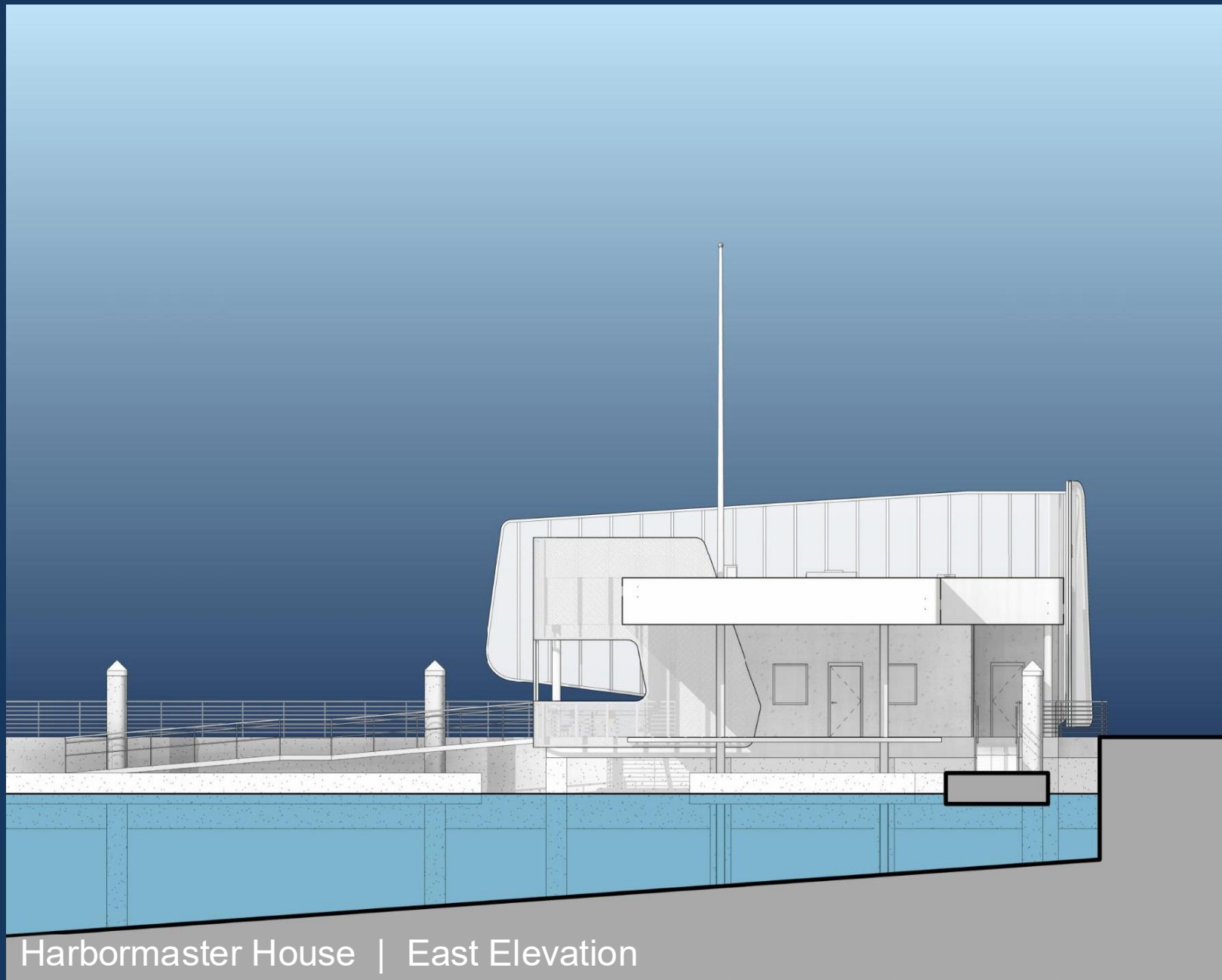
Harbormaster House | North Elevation



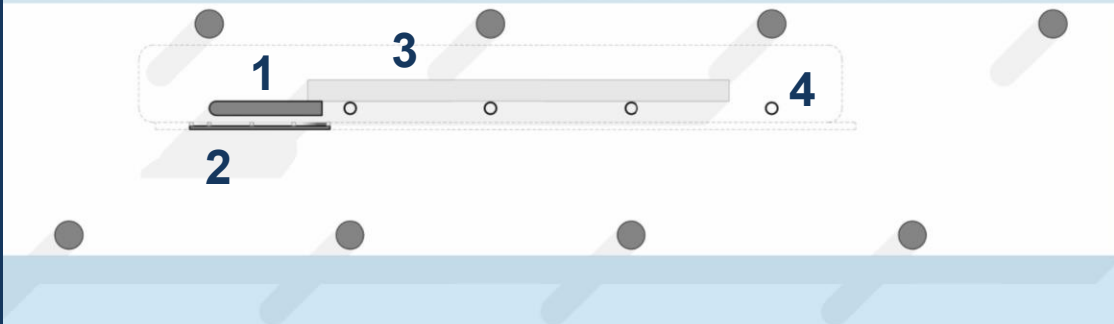
Harbormaster House | West Elevation



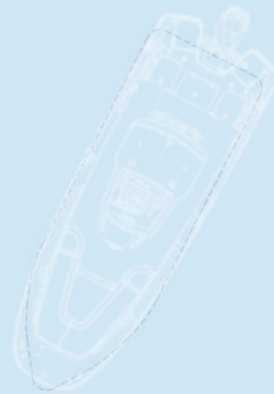
Harbormaster House | South Elevation



Harbormaster House | East Elevation



1. Cast-in-place Concrete with Coating
2. Screen Wall with Coated Steel Frame
3. Concrete Bench with Wood Seat
4. Galvanized Steel Columns with Coating



Water Taxi Shelter | Plan

1. Cast-in-place Concrete with Coating
2. Screen Wall with Coated Steel Frame
3. Concrete Bench with Seat
4. Galvanized Steel Columns with Coating
5. Composite Metal Panel



Water Taxi Shelter | South Elevation

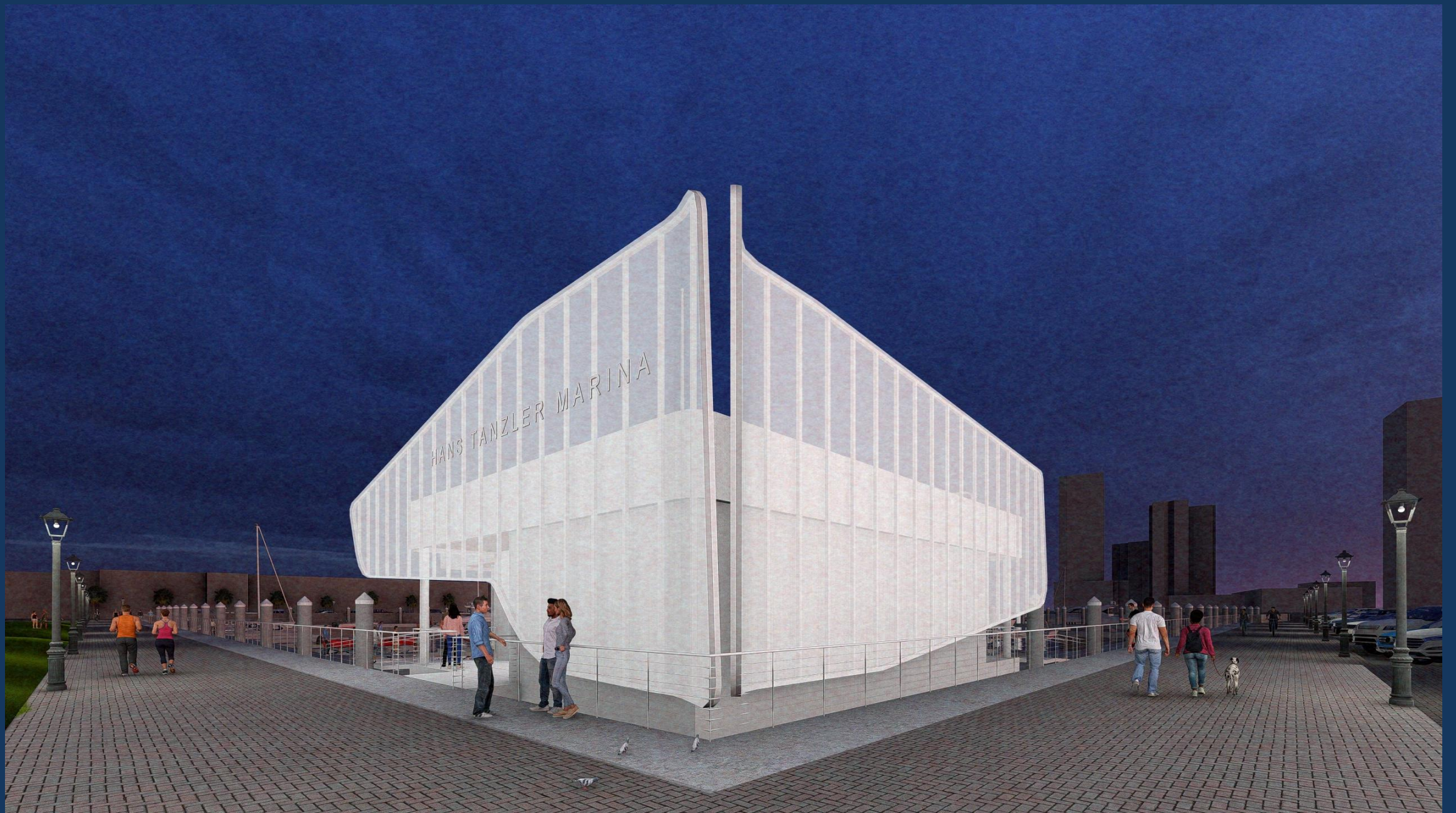
Renderings



Harbormaster House | Main Entry



Harbormaster House | Corner of Market St. & Courthouse Dr.





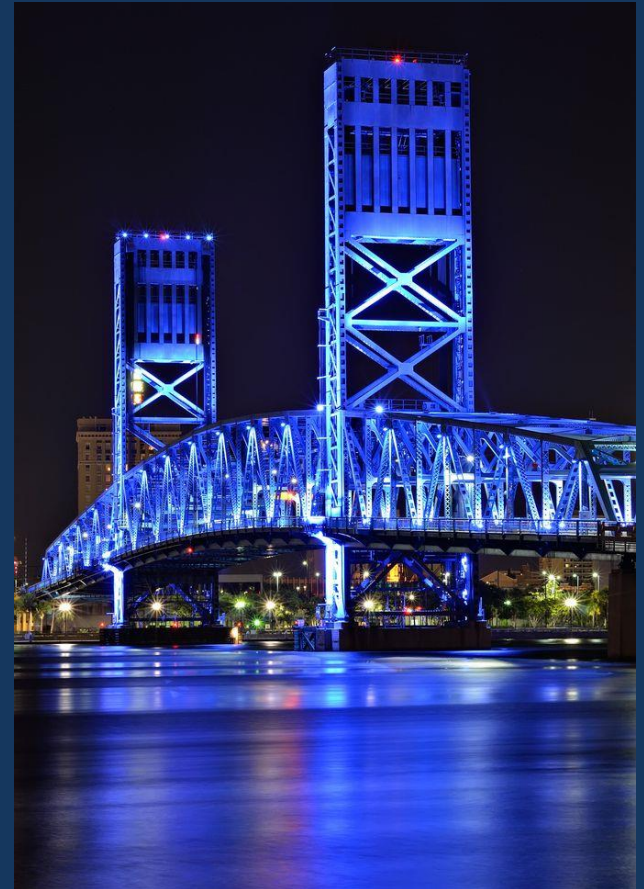
Harbormaster House | Market St.





Harbormaster House | Observation Deck

Downtown Landmarks



Downtown Landmarks





POND

HR